

Kit for Kids[®]

Care • Develop • Grow

Early
Years &
Primary
2024



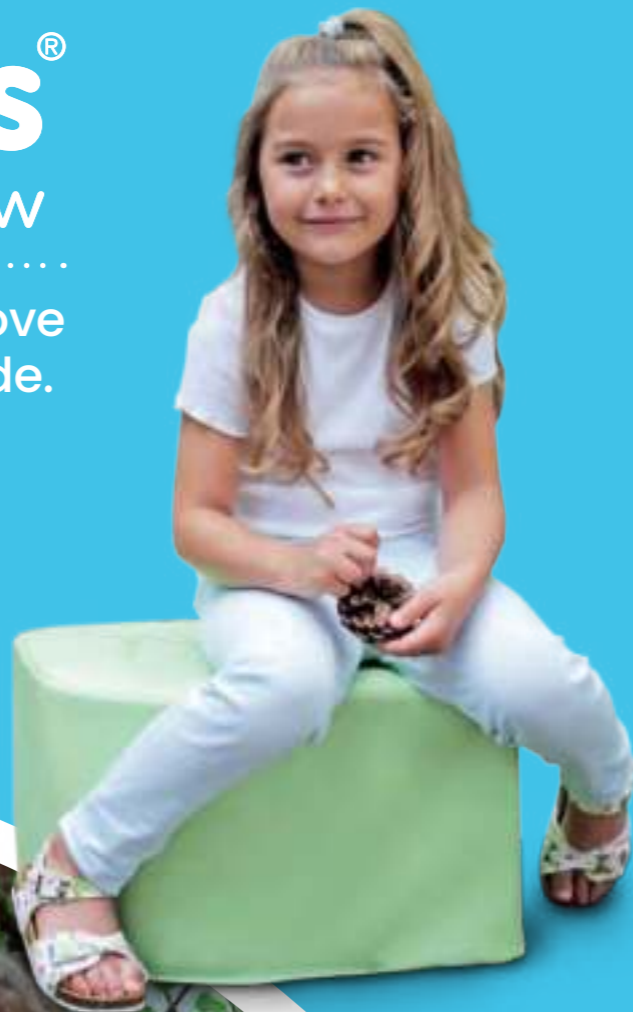
EYFS
MAPPING



Kit for Kids®

Care • Develop • Grow

We create products to improve the lives of children worldwide. We focus on the aspects of a child's journey that really matter; care, development and growth.



What's inside...



Carpets
10

Outdoor Play
88

Soft Furniture
110

Soft Play
144

Tables & Chairs
158

Trolleys
168

Rest & Changing
180



© Kit for Kids is a trading name of One for Fun Ltd. Registered in Scotland No. SC062650. Registered office 3-5 Cambuslang Way, Gateway Office Park, Cambuslang, Glasgow G32 8ND.

All products are the subject of worldwide copyrights, patents and trademarks and which are used under licence.

Any infringement of our intellectual property rights will be vigorously pursued. We reserve the right to alter designs and specifications (including colours and materials) if and when such changes are unavoidable.

besa | 
BRITISH EDUCATIONAL SUPPLIERS ASSOCIATION

Kit for Kids is an official member of the British Education Suppliers Association (BESA). BESA is a trade association who work on behalf of their members to support UK-based companies that supply goods and services to the education sector. This includes lobbying Government and decision-makers on policy issues, providing information, training and advice and provide marketing opportunities and savings for BESA members in the UK and internationally.

Our Partnership with you...

How can we add to our partnership?

It's not about selling product; it's about delivering excellence to the end user. Excellence in this respect means the proposition of value for money, choice and great service.

We play our part by communicating this advocacy of excellence through marketing support. This increases the value proposition, increases the margin for you, our customer, and allows the purchaser to make an informed decision which is not based on price alone.



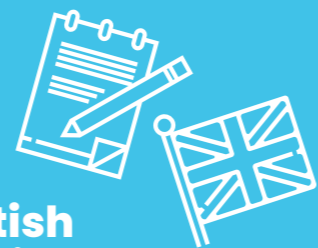
Trade Support Area

Our obsession with excellence extends to the way we communicate with you, the customer. We have made this process effective and simple.



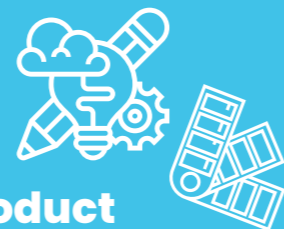
Catalogue Marketing Support

Our design team will work with you to design catalogue pages, spread layouts and branding. This maximises catalogue space and enhances your customer proposition.



British Design

All products are designed in-house by our talented team of designers.



Product Development

Working in partnership to develop and bring your product ideas to life.



Mission

Starlight use the power of play to make the experience of illness and treatment better for children and for their families.



Play is Invaluable

One for Fun help to provide Distraction boxes full of toys, games and puzzles. These are a great toolkit for health professionals to help children feel less anxious before, during and after difficult procedures.



Protectors of Play

As a company, we are dedicated to raising funds throughout the year. All monies raised will help support Starlight's other programs such as Health Play Specialists, family escapes or group days.



STARLIGHT

Our Charity Partner

One for Fun has worked with Starlight for a number of years and we continue to strengthen that relationship after appointing them as our official charity partner. Childhood is a critical time in anyone's development. When illness intervenes, it's of critical importance to protect it. Starlight are passionate about protecting this time of play by providing entertainment and hope to poorly children and their families across the UK.

Contact Us

Our experienced customer service and sales teams can be contacted from **Monday to Friday between 8:30am and 5:00pm GMT** to answer your enquiries.



+44 (0) 1732 455 000



sales@kitforkids.com



Kit for Kids, 2nd floor, North Frith Oast,
North Frith Farm, Ashes Lane, Hadlow,
Tonbridge, Kent, TN11 9QU

Follow us on our journey **#kitforkids**





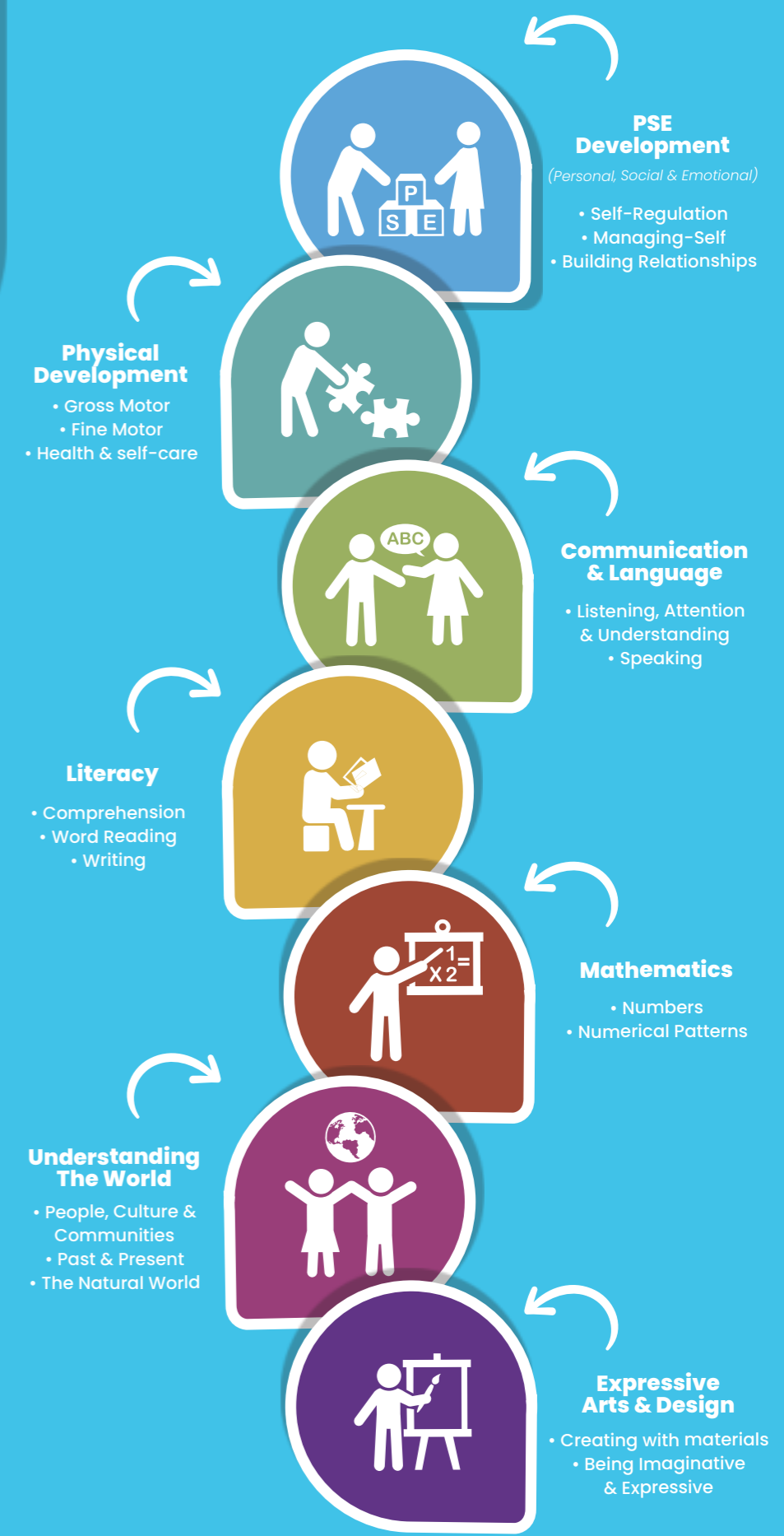
Early Years Foundation Stage

Our comprehensive research is conducted alongside a review of the current Early Years Foundation Stage (EYFS) framework.

This has enabled us to map out and categorise a number of our products to make it easier for teaching staff to see where our products support the key areas of learning and development.

Our research has resulted in the creation of a Kit for Kids Community, working in partnership with a number of schools and nurseries who now benefit from access to new and exciting products in return for their honest feedback and ideas.

All of this helps us to support you, our customers, to ensure all of our products will not only be of the highest quality but also meet the needs and requirements of the end user.



Qualitative Research & Product Development



We have spent a lot of time over the last few years conducting in-depth qualitative research with a number of teachers, schools and nurseries with the sole aim to ensure our products are fit for purpose.

We have employed the use of the Quality Function Deployment technique (QFD) to give a structured approach to defining customer needs and requirements. The process ensures our product development plan focuses on new and updated products that specifically meet those needs identified through the research stage.



Carpets

Our extensive range of carpets is designed to suit all classroom sizes and learning environments, from decorative and shaped carpets to themed placement carpets perfect for group activities and reading.

Carpets

Our carpets are designed to be of the highest quality, perfect for a busy classroom. They support the needs of teaching staff whilst providing opportunities for children to learn, be creative and enjoy the process along the way.

Our carpet range can be divided into a number of subcategories, all of which can be used for multiple activities to provide a valuable cross functional resource in any nursery or classroom.

01 Placement Carpets

Our placement carpets come in a range of designs and sizes to suit any classroom size or space. These carpets are suitable for both group discussions or quiet reading activities. Our large 3x3m carpets can also aid noise absorption in the classroom.



02 Themed Carpets

Our themed carpets are ideal for supporting various key areas of learning and development such as Literacy, Mathematics or Understanding the World. Many of our carpets can also be used to explore different cultures, languages or for managing emotions and behaviour.

Our literacy carpets are linked to the National Curriculum and use Sassoon Infant font to make letters easily identifiable.



All Kit for Kids carpets have anti-slip backing.

04 Carpet Piles

All of our indoor carpets have an anti-slip Dura-Latex™ backing making them suitable for any indoor surface.

There are four grades of pile in the carpet range:

- Super Lightweight Tuf-Pile™
- Light & Durable Tuf-Loop™
- Thick & Soft Tuf-Pile™
- Super Soft Tuf-Pile™



05 Cleaning & Care Guide

Carpets should be spot cleaned with a damp cloth, but do not rub. Never use soap, bleach, laundry detergent or any strong household cleaning agents intended for use on hard surfaces, i.e. woodwork, linoleum or tiles. If in doubt, always seek professional advice.

Avoid contact with sharp or abrasive objects and cleaning machinery, i.e. flooring buffers. We suggest moving carpets when buffing floors to avoid contact.

When vacuuming, adjust the height of the beater bar to lightly agitate the carpet pile but not cause the motor of the vacuum to slow.

Avoid vacuuming over binding and edging.

For more information on outdoor cleaning and care please see pages 90-91 for further instruction.



03 Partnership with Carpet Recycling UK

Kit for Kids are members of Carpet Recycling UK. We hope that this partnership will raise awareness of the challenges of recycling whilst highlighting new ways we can be more sustainable, including encouraging the repurposing of our carpet products.





Be Kind™ Carpets

Encourage children to build constructive and respectful relationships with the help of our Be Kind carpet range.

Featuring the colours of the rainbow, this is a great decorative carpet for the classroom



Kindness Carpet

MAT1270
Size: W x D: 2000 x 2000mm



Take a closer look



Be Kind™ Carpet

• Features 16 values and behaviours for group discussions.

MAT1269
Size: W x D: 2000 x 1330mm



EYFS MAPPING
to help teaching staff choose the right resources.



Emotions™ Carpets

12 different emotions help children learn to self-regulate feelings and behaviour.



Emotions™ Faces Circular Carpet

- Features 12 placement spots and 1 teacher placement.

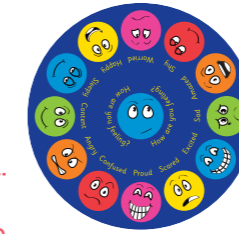
MAT1196
Size: W x D: 2000 x 2000mm



Emotions™ Circular Carpet

- Features 12 placement spots and 1 teacher placement.

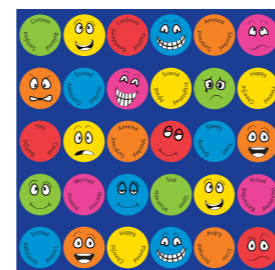
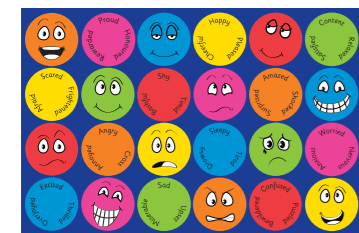
MAT1168
Size: W x D: 2000 x 2000mm



Emotions™ Rectangular Placement Carpet

- Features 24 placement spots.

MAT1169
Size: W x D: 3000 x 2000mm



Emotions™ Large Square Placement Carpet

- Features 30 placement spots.

MAT1170
Size: W x D: 3000 x 3000mm



Emotions™ Cushions see page 114



MAT1168



EYFS MAPPING to help teaching staff choose the right resources.



PSE Development



Physical Development



Communication & Language



Literacy



Mathematics



Understanding The World



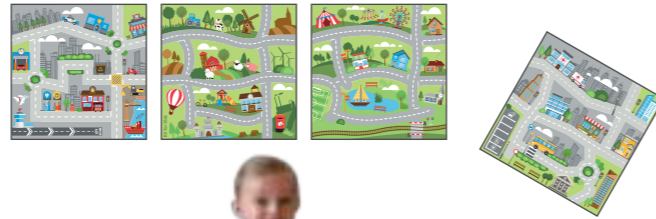
Expressive Arts & Design

Small World Road Map Carpets

Our versatile road maps support the development of gross and fine motor skills, and promote imaginative role play.



Multiple connection points



Small World Road Map - Set 1

- Set of 4 road maps that are designed to be placed in any combination next to each other, or used individually.
- Two urban and two country squares, with modern additions such as electric car charging points and recycling bins.
- Supports physical development through wheeled toy play.

MAT1226 / Pack of 4

Size: W x D: 1000 x 1000mm (each carpet)



MAT1227
Perfect for small world play



Small World Road Map - Set 2

- Set of 4 road maps that are designed to be placed in any combination next to each other, or used individually.
- Each carpet depicts a different environment and climate; urban, desert, arctic and tropical.
- Supports gross and fine motor skill development.

MAT1227 / Pack of 4

Size: W x D: 1000 x 1000mm (each carpet)

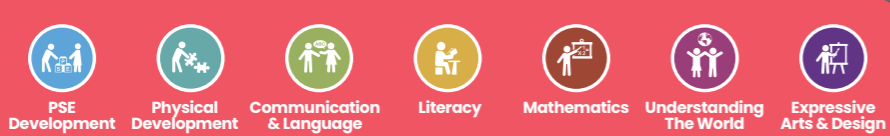


MAT1226

Suitable for indoor and outdoor use



EYFS MAPPING to help teaching staff choose the right resources.



Yoga & Mindfulness Carpets

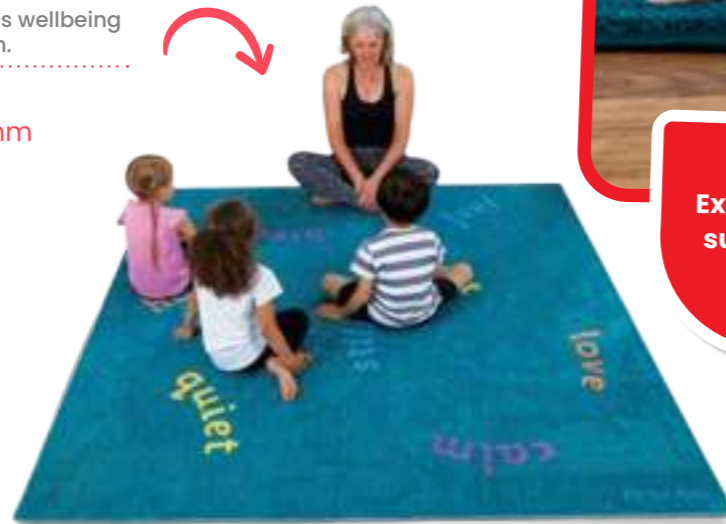
Practising yoga and mindfulness during the early years can help with managing anxiety, improving concentration and developing strength and flexibility.

Mindfulness Carpet

• Ideal for promoting children's wellbeing and overall emotional health.

MAT1220

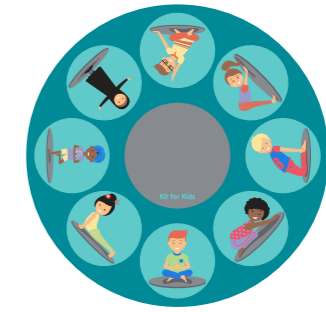
Size: W x D: 2000 x 2000mm



Take a closer look



Extra thick, super soft pile



Yoga Carpet

• Features 8 large placement areas and a teacher space helping children practise their positions.

MAT1221

Size: W x D: 2000 x 2000mm



Yoga Position Mini Carpets

• Mini placement carpets supplied with a free of charge holdall for easy storage.

BN2135 / Pack of 32

Size: W x D: 400 x 400mm (each carpet)



Suitable for indoor and outdoor use

BN2135



MAT1221

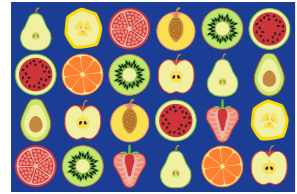


EYFS MAPPING
to help teaching staff choose the right resources.



Fruit Carpets

With health and wellbeing key topics in the classroom, our fun fruit range is the perfect addition to the learning environment.



Fruit Rectangular Placement Carpet

- Features 24 placement spots.

MAT1172

Size: W x D: 3000 x 2000mm



Physical Development



Carpets



BN2130



Fruit Mini Placement Carpets

BN2130 / Pack of 32
Size: W x D: 400 x 400mm (each carpet)



BN2155



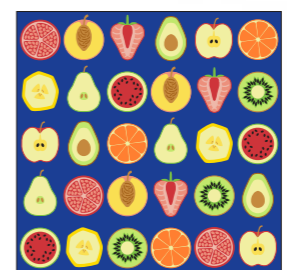
Includes free mystery runner

Health & Wellbeing Bundle

- Features 30 placement spots.

BN2155

Size: W x D 3000 x 3000mm



EYFS MAPPING
to help teaching staff choose the right resources.



MAT1201



Nutrition Carpet

- Encourages children to discuss and understand the different food groups and gives an opportunity to explore healthy food choices.

MAT1201

Size: W x D: 2000 x 2000mm

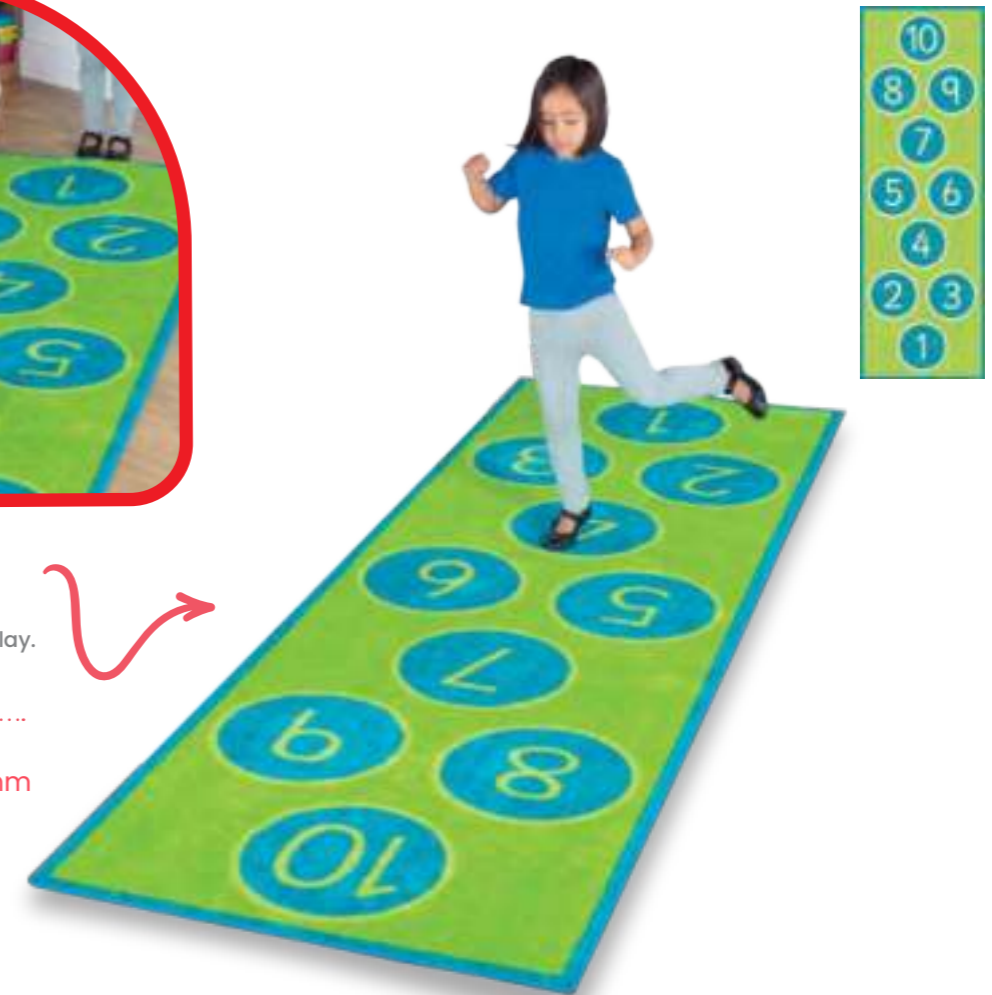


Hopscotch Carpet

- Helps to build relationships whilst encouraging active play.
- Great for developing basic numeracy skills.

MAT1138

Size: W x D: 3000 x 1000mm



EYFS MAPPING
to help teaching staff choose the right resources.



PSE Development



Physical Development



Communication & Language



Literacy



Mathematics



Understanding The World



Expressive Arts & Design

Colours of Nature Carpets

Developed to reflect the harmonious and calming colours of nature, these new ranges offer a unique and balanced palette that has been carefully selected to reflect the environment from which it was inspired.



Rainforest colour palette



I'm NEW

Rainforest Squares Large Placement Carpet

- Featuring 30 Rainforest inspired placement squares.

MAT1282

Size: W x D: 3000 x 3000mm



Safari colour palette



I'm NEW

Safari Large Semi-Circle Placement Carpet

- A large semi-circle carpet featuring 24 Safari inspired placement spots and one large teacher placement spot.

MAT1305

Size: W x D: 4000 x 2000mm



MAT1282

MAT1305



EYFS
EYFS MAPPING
to help teaching staff choose the right resources.





Lake colour palette



Lake Circles Rectangular Placement Carpet

- Featuring 24 calming Lake inspired placement spots.

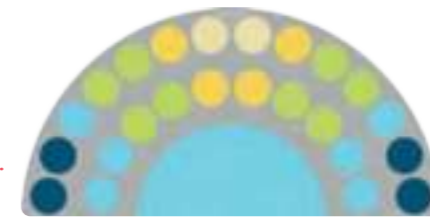
MAT1301
Size: W x D: 3000 x 2000mm



Lake Large Semi-Circle Placement Carpet

- A large semi-circle carpet featuring 24 calming Lake inspired placement spots and one large teacher placement spot.

MAT1298
Size: W x D: 4000 x 2000mm



I'm NEW



Take a closer look

I'm NEW



MAT1301



MAT1298



EYFS MAPPING
to help teaching staff choose the right resources.





Lake colour palette



Lake Circles Placement Carpet

- Featuring 16 calming Lake inspired placement spots.

MAT1280
Size: W x D: 2000 x 2000mm



I'm NEW

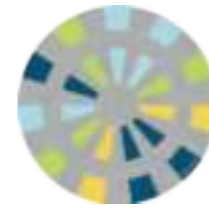


MAT1280



Star Burst Carpet

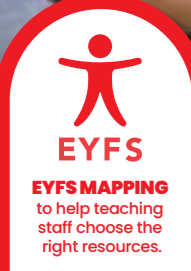
MAT1289
Size: W x D: 2000 x 2000mm



I'm NEW



MAT1289

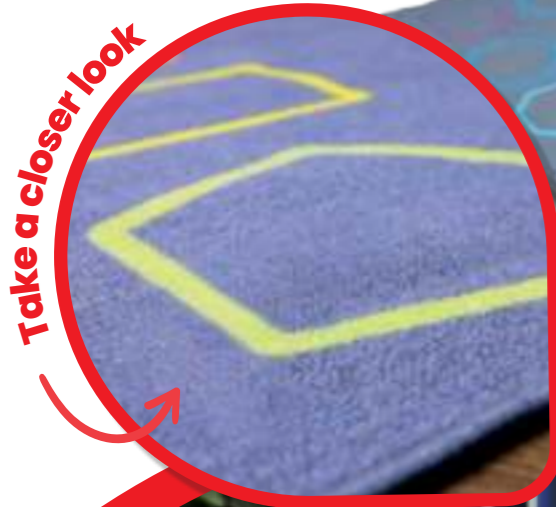
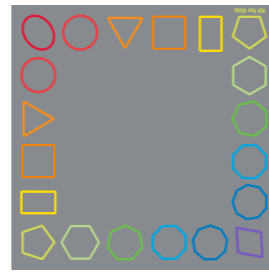


Essentials™ Carpets

A versatile range of indoor/outdoor carpets that provide excellent value for money.

Essentials™ Rainbow Geometric Border Carpet

MAT1273
Size: W x D: 2000 x 2000mm



MAT1273

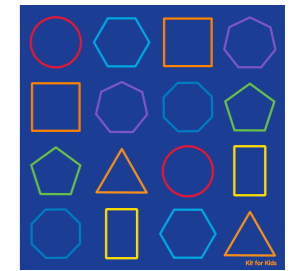


Ideal for use with our Geometric Shaped mats FC0025-GL page 132



Essentials™ Rainbow Geometric Carpet

MAT1272
Size: W x D: 2000 x 2000mm



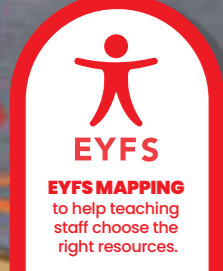
16 placements with 8 different geometric shapes



Suitable for indoor and outdoor use

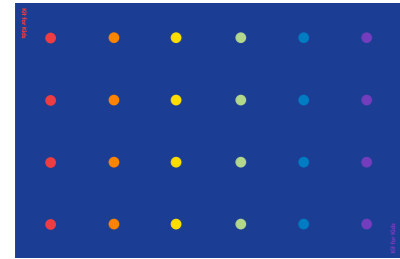


MAT1272



Essentials™ Rainbow Spots Carpet

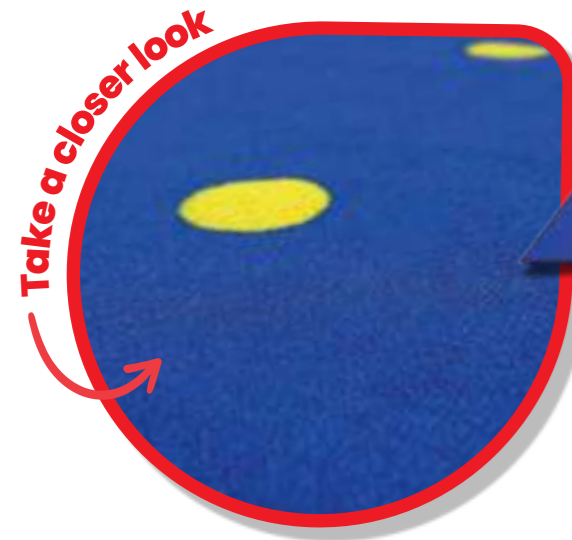
MAT1264
Size: W x D: 3000 x 2000mm



MAT1264



Excellent value placement carpets to suit any setting



MAT1263

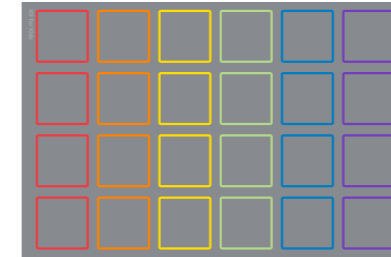
Essentials™ Rainbow Stars Carpet

MAT1263
Size: W x D: 3000 x 2000mm



Essentials™ Rainbow Square Carpet

MAT1268
Size: W x D: 3000 x 2000mm



Suitable for indoor and outdoor use



MAT1268

Versatile placement carpet with both primary and secondary colours



EYFS
EYFS MAPPING
to help teaching staff choose the right resources.



Rainbow™ Carpets

A range of bright placement carpets for the classroom.



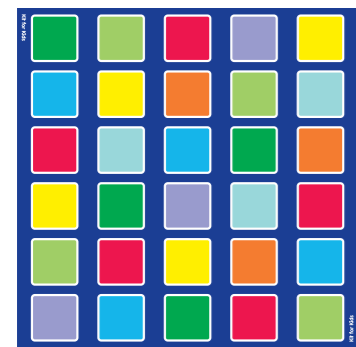
MAT1224

Rainbow™ Squares Large Placement Carpet

• Features 30 placement squares.

MAT1224

Size: W x D: 3000 x 3000mm

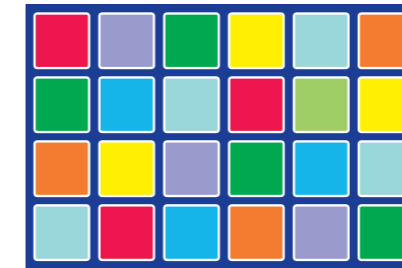


Rainbow™ Squares Rectangular Placement Carpet

• Features 24 placement squares.

MAT1013

Size: W x D: 3000 x 2000mm



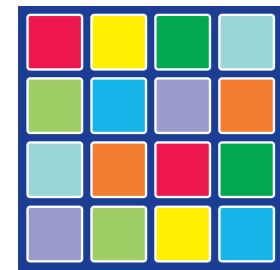
Communication & Language



Take a closer look



MAT1013

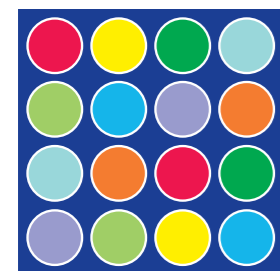


Rainbow™ Squares Placement Carpet

• Features 16 placement squares.

MAT1019

Size: W x D: 2000 x 2000mm



Rainbow™ Circles Placement Carpet

• Features 16 placement spots.

MAT1020

Size: W x D: 2000 x 2000mm



EYFS MAPPING
to help teaching staff choose the right resources.





MAT1051

Great for teacher and pupil interaction



Rainbow™ Corner Placement Carpet

- Features 12 placement spots and 1 teacher placement.

MAT1051
Size: W x D: 2000 x 2000mm



Communication & Language



Carpets

MAT1052



Rainbow™ Semi-Circle Placement Carpet

- Features 13 placement spots and 1 teacher placement.

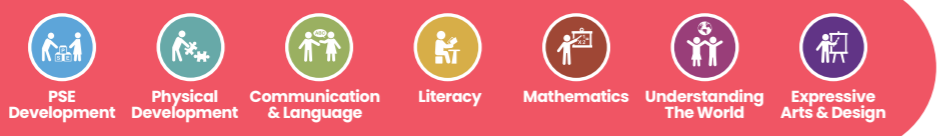
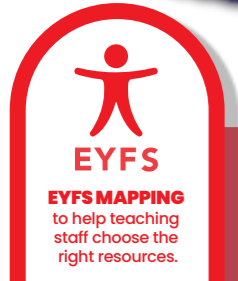
MAT1052
Size: W x D: 3000 x 1500mm



Rainbow™ Large Semi-Circle Placement Carpet

- Features 24 placement spots and 1 teacher placement.

MAT1035
Size: W x D: 4000 x 2000mm



Literacy Carpets

Great for learning word and letter recognition.



MAT1231



Square Alphabet Carpet

- Features 25 placement squares.

MAT1231

Size: W x D: 2000 x 2000mm

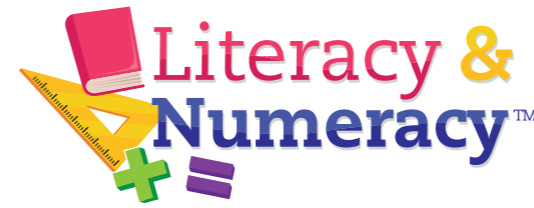


Alphabet Placement Carpet

- Features 26 placement squares.

MAT1230

Size: W x D: 3000 x 2000mm



Literacy



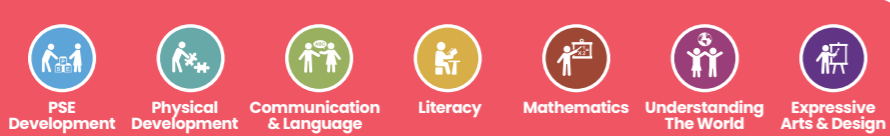
Carpets



MAT1230

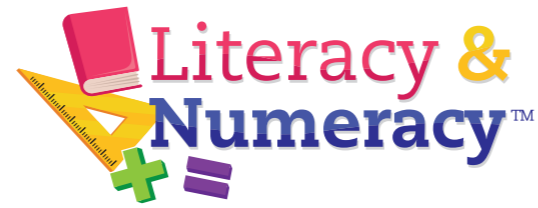


EYFS MAPPING
to help teaching staff choose the right resources.

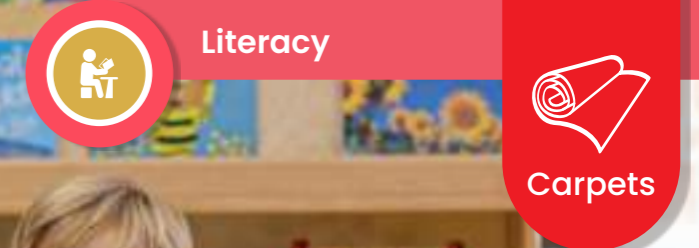
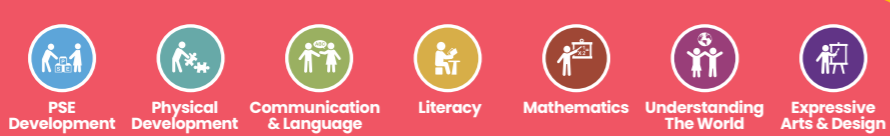


Alphabet Mini Placement Carpets

BN2148 / Pack of 26
 Size: W x D: 400 x 400mm (each carpet)



BN2148

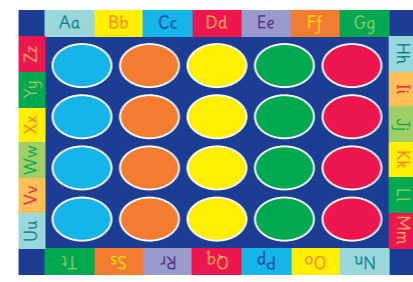
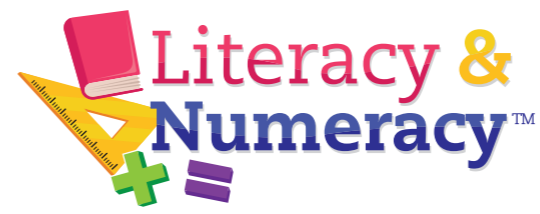


MAT1258

German Alphabet Carpet

• Features 26 placement squares.
MAT1258
 Size: W x D: 3000 x 2000mm





ABC Rectangle Carpet

• Features 20 placement spots.

MAT1014

Size: W x D: 3000 x 2000mm



MAT1007

Oval Pencils Alphabet Carpet

MAT1007

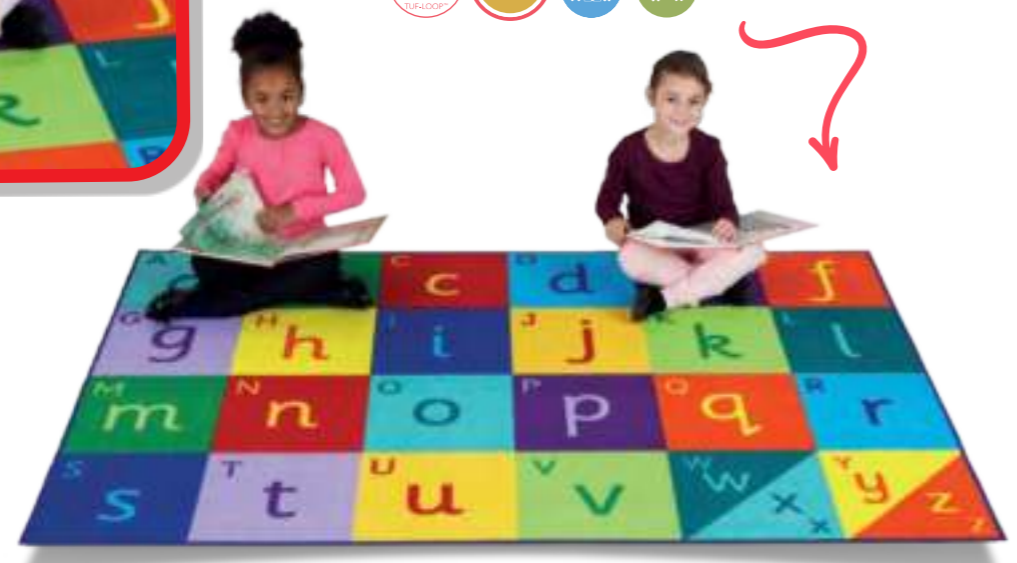
Size: W x D: 3000 x 2000mm



Alphabet Carpet

MAT1060

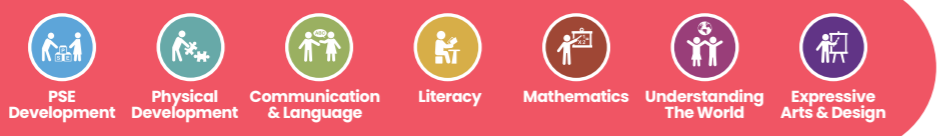
Size: W x D: 2000 x 1500mm



MAT1014

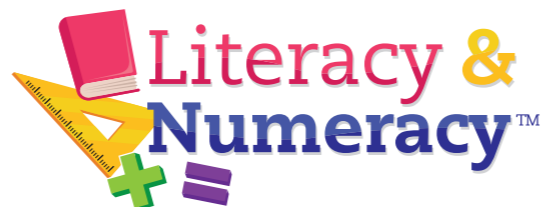


EYFS MAPPING
to help teaching staff choose the right resources.



Mathematics Carpets

Our range of rainbow themed numeracy carpets aid the visualisation of numbers and number bonds.



100 Square Counting Grid Carpet

MAT1247
Size: W x D: 2000 x 2000mm



	+	-	x	÷	=				
1	2	3	4	5	6	7	8	9	10
11	12	13	14	15	16	17	18	19	20
21	22	23	24	25	26	27	28	29	30
31	32	33	34	35	36	37	38	39	40
41	42	43	44	45	46	47	48	49	50
51	52	53	54	55	56	57	58	59	60
61	62	63	64	65	66	67	68	69	70
71	72	73	74	75	76	77	78	79	80
81	82	83	84	85	86	87	88	89	90
91	92	93	94	95	96	97	98	99	100
	+	-	x	÷	=				



Take a closer look



MAT1247

Multiplication Grid Carpet

MAT1248
Size: W x D: 2000 x 2000mm



X	1	2	3	4	5	6	7	8	9	10	11	12
1	2	4	6	8	10	12	14	16	18	20	22	24
2	4	8	12	16	20	24	28	32	36	40	44	48
3	6	12	18	24	30	36	42	48	54	60	66	72
4	8	16	24	32	40	48	56	64	72	80	88	96
5	10	20	30	40	50	60	70	80	90	100	110	120
6	12	24	36	48	60	72	84	96	108	120	132	144
7	14	28	42	56	70	84	98	112	126	140	154	168
8	16	32	48	64	80	96	112	128	144	160	176	192
9	18	36	54	72	90	108	126	144	162	180	198	216
10	20	40	60	80	100	120	140	160	180	200	220	240
11	22	44	66	88	110	132	154	176	198	220	242	264
12	24	48	72	96	120	144	168	192	216	240	264	288



Number Bonds Carpet

MAT1249
Size: W x D: 2000 x 2000mm



	0	1	2	3	4	5	6	7	8	9	10
0+10	1+9	2+8	3+7	4+6	5+5	6+4	7+3	8+2	9+1	10+0	



MAT1249



EYFS MAPPING
to help teaching staff choose the right resources.

- PSE Development
- Physical Development
- Communication & Language
- Literacy
- Mathematics
- Understanding The World
- Expressive Arts & Design



Literacy & Numeracy™

1-24 Number Indoor/Outdoor Mini Carpets

• Excellent for developing mathematical skills in a fun, interactive way.

BN0150 / Pack of 24
Size: W x D: 400 x 400mm (each carpet)



1	2	3	4	5	6
7	8	9	10	11	12
13	14	15	16	17	18
19	20	21	22	23	24

BN0150

1-100 Numbers Carpet

MAT1011
Size: W x D: 2000 x 1500mm



1	2	3	4	5	6	7	8	9	10
11	12	13	14	15	16	17	18	19	20
21	22	23	24	25	26	27	28	29	30
31	32	33	34	35	36	37	38	39	40
41	42	43	44	45	46	47	48	49	50
51	52	53	54	55	56	57	58	59	60
61	62	63	64	65	66	67	68	69	70
71	72	73	74	75	76	77	78	79	80
81	82	83	84	85	86	87	88	89	90
91	92	93	94	95	96	97	98	99	100



MAT1011



MAT1012

1-24 Numbers Carpet

MAT1012
Size: W x D: 1500 x 1000mm



1	2	3	4	5	6
7	8	9	10	11	12
13	14	15	16	17	18
19	20	21	22	23	24



EYFS MAPPING
to help teaching staff choose the right resources.





BN2138

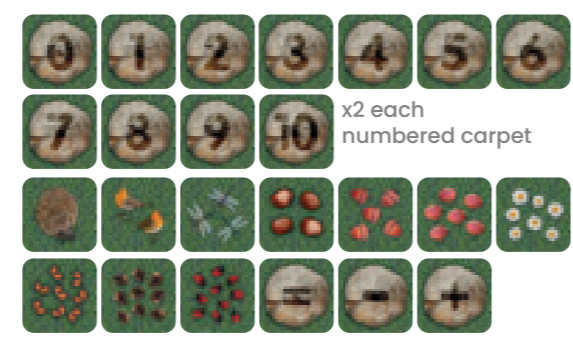
Suitable for indoor and outdoor use

NATURAL World™

Natural World™ Counting Mini Carpets

- Pack of woodland themed indoor/outdoor carpet tiles allow children to practise sums and number bonds.
- Pack includes numbers 0-10, corresponding objects for numbers relating to the theme as well as plus, minus and equals signs.

BN2138 / Pack of 35
Size: W x D: 400 x 400mm (each carpet)



Back to Nature™ Chloe Caterpillar Numeracy & Literacy Carpet

- Great for cross-curricular use, providing opportunities for developing both literacy and numeracy skills.

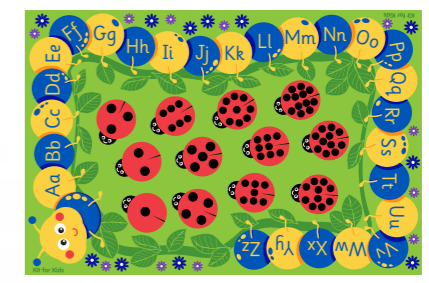
MAT1274
Size: W x D: 3000 x 2000mm



*Cushions supplied separately

Mathematics

Carpets



I'm NEW



Perfect to use with Back to Nature™ Sensory Cushions pages 122-123



MAT1274



EYFS MAPPING to help teaching staff choose the right resources.





MAT1271

Includes 10 different Geometric 2D shapes



Geometric Shape Carpet

- Can be used in key stage 1 and 2 for shape identification and colours.
- Can be used as a decorative placement carpet, with 30 placement spots.
- Ideal for all Early Years and Primary settings.

MAT1271

Size: W x D: 3000 x 3000mm



Includes all key shapes identified in the UK curriculum



MAT1271

Ideal for use with our Geometric shaped mats FC0025-GL page 132



EYFS MAPPING
to help teaching staff choose the right resources.



PSE Development



Physical Development



Communication & Language



Literacy



Mathematics



Understanding The World



Expressive Arts & Design

Natural World™ Carpets

These neutral placement carpets are perfect for creating a calm atmosphere in the classroom, as well as promoting quiet time and child wellbeing.



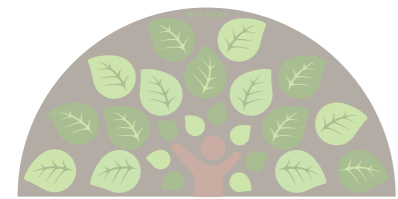
Take a closer look

Natural World™ Semi-Circle Placement Carpet

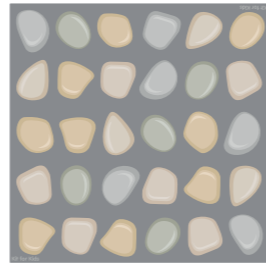
- Features 15 placement spots and 1 teacher placement.

MAT1253

Size: W x D: 3000 x 1500mm



Ideal for use alongside our Natural World™ Cushions range. Pages 126-127



Natural World™ Pebble Placement Carpet

- Features 30 placement spots.

MAT1251

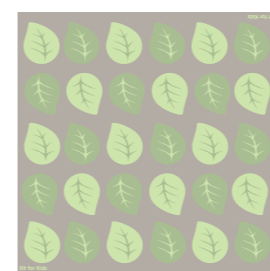
Size: W x D: 3000 x 3000mm



MAT1251



Take a closer look



Natural World™ Leaf Placement Carpet

- Features 30 placement spots.

MAT1250

Size: W x D: 3000 x 3000mm



Ideal for use alongside our Natural World™ seating range. Pages 136-139



MAT1250



EYFS MAPPING to help teaching staff choose the right resources.





Natural World™ Carved Leaf Placement Carpet

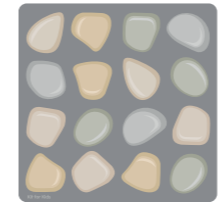
• Featuring 16 placement spots.

MAT1309

Size: W x D: 2000 x 2000mm



I'm NEW



Natural World™ Carved Pebble Placement Carpet

• Featuring 16 placement spots.

MAT1300

Size: W x D: 2000 x 2000mm



I'm NEW



MAT1309



MAT1300

Carved pile adds a tactile and decorative element to the carpet, providing a full sensory and visual experience



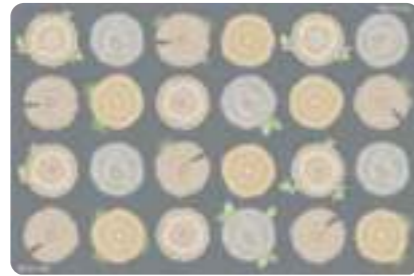


NATURAL World™

Natural World™ Tree Stump Placement Carpet

MAT1307

Size: W x D: 3000 x 2000mm



MAT1307

Features 24 placement spots with a neutral design suitable for any classroom setting



Take a closer look



EYFS MAPPING
to help teaching staff choose the right resources.



PSE Development



Physical Development



Communication & Language



Literacy



Mathematics



Understanding The World



Expressive Arts & Design

Zoo Conservation™ Carpets

Our range of conservation placement carpets are perfect for freshening up the classroom in a modern colour palette. All the featured animals are on the endangered species list so this range can be used as a discussion topic regarding the specific animals and their habitats, as well as for wider exploration of conservation and the environment.



Zoo Conservation™ Large Placement Carpet

- Features 30 placement spots.

MAT1240

Size: W x D: 3000 x 3000mm



Zoo Conservation™ Mini Placement Carpets

BN2146 / Pack of 30

Size: W x D: 400 x 400mm (each carpet)



Understanding The World



Carpets

BN2146



MAT1240

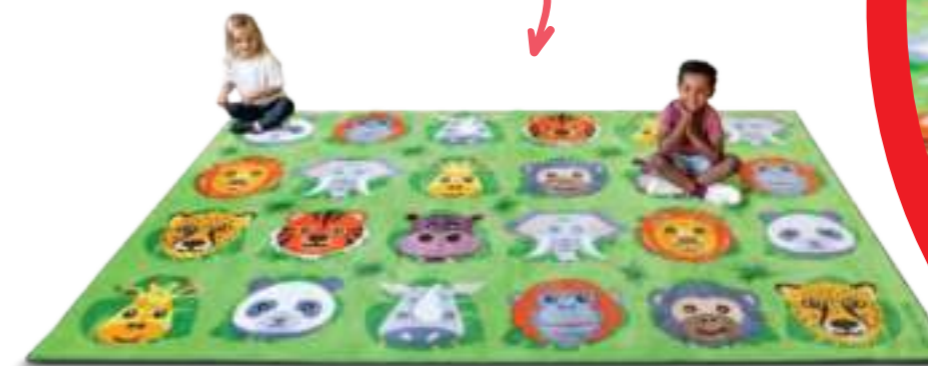


Zoo Conservation™ Rectangular Placement Carpet

- Features 24 placement spots.

MAT1246

Size: W x D: 3000 x 2000mm



MAT1246



EYFS MAPPING
to help teaching staff choose the right resources.



PSE Development



Physical Development



Communication & Language



Literacy



Mathematics



Understanding The World



Expressive Arts & Design

Back to Nature™ Carpets

Our best selling Back to Nature range featuring five different bug characters.

Back to Nature™ Corner Bug Placement Carpet

• Features 10 placement spots and 1 teacher placement.

MAT1235

Size: W x D: 2000 x 2000mm



Back to Nature™ Large Corner Bug Placement Carpet

• Features 24 placement spots and 1 teacher placement.

MAT1234

Size: W x D: 3000 x 3000mm

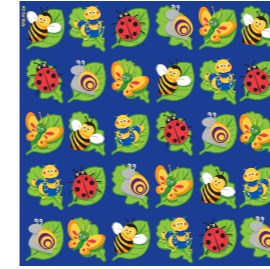


Back to Nature™ Large Square Bug Placement Carpet

• Features 30 placement spots.

MAT1233

Size: W x D: 3000 x 3000mm



EYFS
EYFS MAPPING
to help teaching
staff choose the
right resources.



PSE Development



Physical Development



Communication & Language



Literacy



Mathematics



Understanding The World



Expressive Arts & Design

Back to Nature™ Mini Bug Placement Carpets

BN2147 / Pack of 14

Size: W x D: 400 x 400mm (each carpet)



BN2147

Free storage holdall included



Back to Nature™ Minibeasts Carpet

MAT1057

Size: W x D: 2400 x 2000mm

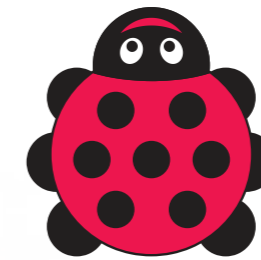


MAT1057

Back to Nature™ Giant Ladybird Shaped Carpet

MAT1092

Size: W x D: 2000 x 2000mm



EYFS MAPPING
to help teaching staff choose the right resources.



PSE Development



Physical Development



Communication & Language



Literacy



Mathematics



Understanding The World



Expressive Arts & Design



Forest Friends™ Corner Placement Carpet

MAT1254
Size: W x D: 2000 x 2000mm



Take a closer look



Ideal for use alongside the Forest Friends™ Toadstool and Natural World™ Seating pages 136-137



MAT1254



Woodland Animals Placement Carpet

• Features 30 placement spots.
MAT1244
Size: W x D: 3000 x 3000mm



Take a closer look



MAT1244



EYFS MAPPING to help teaching staff choose the right resources.



Under the Sea™ Carpets

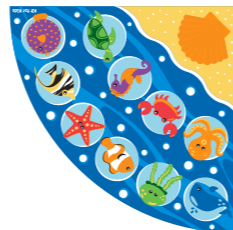
Our popular Under the Sea placement range featuring twelve different sea characters.

Under the Sea™ Corner Placement Carpet

- Features 10 placement spots and 1 teacher placement.

MAT1239

Size: W x D: 2000 x 2000mm



Under the Sea™ Rectangular Placement Carpet

- Features 24 placement spots.

MAT1238

Size: W x D: 3000 x 2000mm



MAT1237

Take a closer look



Under the Sea™ Large Square Placement Carpet

- Features 30 placement spots.

MAT1237

Size: W x D: 3000 x 3000mm



EYFS MAPPING
to help teaching staff choose the right resources.



PSE Development



Physical Development



Communication & Language



Literacy



Mathematics



Understanding The World



Expressive Arts & Design

Double Sided Carpets

Featuring stunning high quality digital print, these double sided carpets offer versatility and great value for money. Simply turn the carpet over for an imaginative, interchangeable resource. Supplied with separate non-slip backing.



NATURAL World™



Easy to turn over, creating a brand new classroom area in minutes



Natural World™ Woodland and Minibeasts Double Sided Carpet

BN2132 / Size: W x D: 2000 x 2000mm



SIDE 1

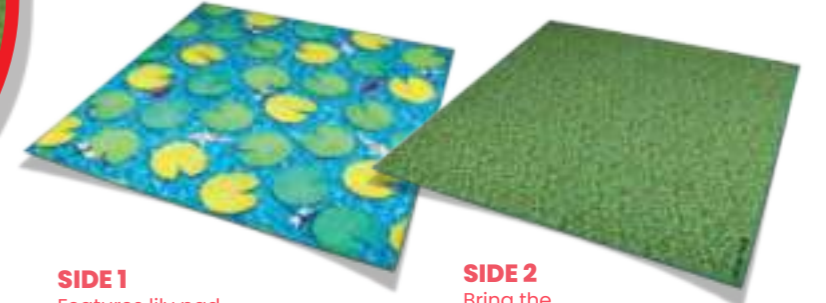
Features tree stump placements which can also be used as stepping stones.

SIDE 2

Shows realistic minibeasts and foliage for fun, imaginative play.

Natural World™ Grass and Lily Pads Double Sided Carpet

BN2139 / Size: W x D: 2000 x 2000mm



SIDE 1

Features lily pad placements which can also be used as stepping stones.

SIDE 2

Bring the outside in with this realistic grass scene.

Natural World™ Ocean and Beach Double Sided Carpet

BN2140 / Size: W x D: 2000 x 2000mm



SIDE 1

Shows a realistic underwater world for fun, imaginative play.

SIDE 2

Features beach themed placements which can also be used as stepping stones.



EYFS MAPPING to help teaching staff choose the right resources.



PSE Development



Physical Development



Communication & Language



Literacy



Mathematics



Understanding The World



Expressive Arts & Design



THE World AROUND US™

MAT1212

Animals & Places of the World Carpet

- Ideal for encouraging different group discussions about the world, countries, climates, animals and multicultural studies. Also doubles up as a colourful backdrop for creative small world play.

MAT1212
Size: W x D: 3000 x 2000mm



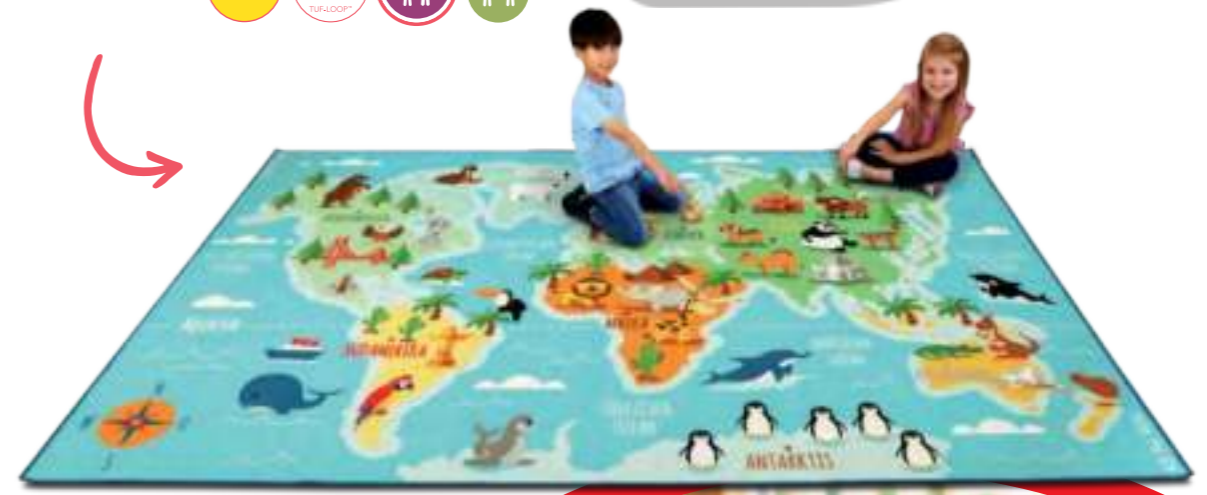
BEST SELLER



German Animals & Places of the World Carpet

- Colourful map of the world with the oceans and continents labelled in German.

MAT1222
Size: W x D: 3000 x 2000mm





MAT1202



MAT1213



Understanding The World



Carpets



Seasons Carpet

• Great for exploring weather, seasons and months, offering many opportunities for group discussion.

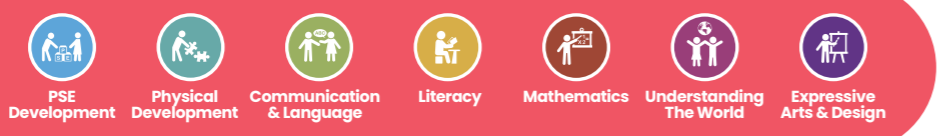
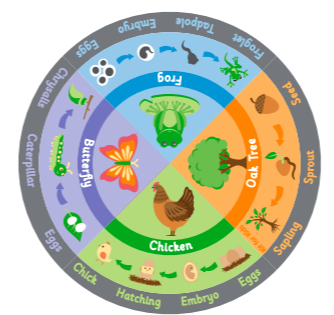
MAT1202
Size: W x D: 2000 x 2000mm



Life Cycles Carpet

• Four examples of life cycles in the natural world, covering both the animal and plant kingdoms.

MAT1213
Size: W x D: 2000 x 2000mm





People who Help Us Carpets

These carpets are great for helping children identify adults who may help or interact with them.



This pack includes a nurse, farmer, decorator, chef, builder, police officer, postal worker, vet, pilot and fire fighter



People Who Help Us Mini Carpets

- Allows children to mix up the faces and uniforms for a fun and interactive way of exploring the featured professions.

BN2131 / Pack of 40

Size: W x D: 400 x 400mm (each carpet)



People Who Help Us Circular Carpet

MAT1175

Size: W x D: 2000 x 2000mm



Take a closer look



EYFS MAPPING
to help teaching staff choose the right resources.



Children of the World Carpets

Creating awareness of people, communities and cultural differences.

BEST SELLER



Children of the World Multi-Cultural Carpet - Teal

MAT1158
Size: W x D: 2000 x 2000mm



MAT1158



MAT040



Children of the World Multi-Cultural Carpet

MAT040
Size: W x D: 2000 x 2000mm



Understanding The World



BEST SELLER



MAT1160

Children of the World Welcome Carpet

• Features the word "welcome" in 36 languages.

MAT1160
Size: W x D: 2000 x 1330mm



EYFS MAPPING
to help teaching staff choose the right resources.



PSE Development



Physical Development



Communication & Language



Literacy



Mathematics



Understanding The World



Expressive Arts & Design

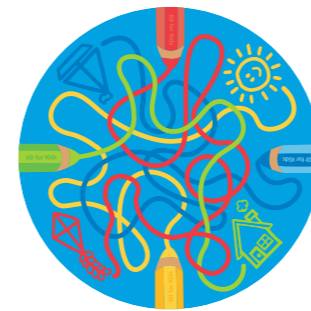
Decorative Carpets

Versatile carpets that can be used for multiple activities whilst brightening up the classroom

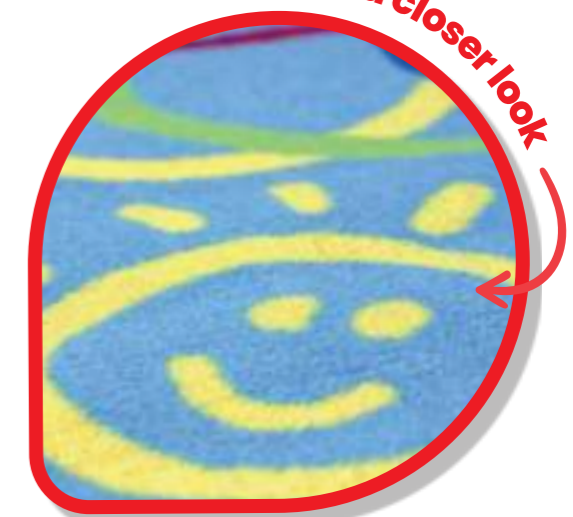


Rainbow™ Colour Tubes Carpet

MAT1228
Size: W x D: 2000 x 2000mm



Take a closer look



Rainbow™ Colour Wheel Carpet

MAT1223
Size: W x D: 2000 x 2000mm



MAT1223

Take a closer look



EYFS MAPPING
to help teaching staff choose the right resources.

- PSE Development
- Physical Development
- Communication & Language
- Literacy
- Mathematics
- Understanding The World
- Expressive Arts & Design



MAT086

Rainbow™ Colour Palette Carpet

MAT086
Size: W x D: 2000 x 2000mm



MAT204

Rainbow™ Circular Polygons Carpet

MAT204
Size: W x D: 2000 x 2000mm



MAT1257



Musical Instruments Carpet

MAT1257
Size: W x D: 2000 x 2000mm



Music development during early years has a wealth of benefits, including improving fine motor skills, language development, focus, teamwork and even fundamental maths skills. Music can also help with children's self esteem and confidence, so is great for overall wellbeing



EYFS MAPPING
to help teaching staff choose the right resources.

- PSE Development
- Physical Development
- Communication & Language
- Literacy
- Mathematics
- Understanding The World
- Expressive Arts & Design

Storytime™ Carpets

Storytime during early years development will spark a child's imagination and stimulate their curiosity. It also helps to develop children's social and communication skills through collaborative play.

Storytime™ Carpet
MAT1225
 Size: W x D: 2000 x 2000mm



Storytime™ Interactive Carpet Tiles

Mix and match these Storytime carpet tiles to create your very own story.

BN2136 / Pack of 32
 Size: W x D: 400 x 400mm (each carpet)



Take a closer look



EYFS MAPPING
 to help teaching staff choose the right resources.



Luxury™ Super Soft Carpets

Great for libraries, reading areas and quiet zones.



Navy Circular Carpet
MAT1191
 Size: W x D: 2000 x 2000mm



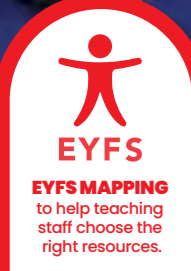
Grey Circular Carpet
MAT1190
 Size: W x D: 2000 x 2000mm



Navy Square Carpet
MAT1186
 Size: W x D: 2000 x 2000mm



Grey Square Carpet
MAT1185
 Size: W x D: 2000 x 2000mm





Outdoor Play

.....
A range of outdoor products to support learning and play outside the classroom.



Outdoor Play

A versatile range of educational products that supports outdoor learning.



02 Outdoor Mats & Trolleys

Our outdoor mats are supplied with storage trolleys with lockable castors or holdalls, making them easy to move from the classroom to outdoors. The cushions are machine washable and perfect for outdoor group activities or quiet reading sessions.



03 Cleaning & Care Guide

Outdoor carpets should be spot cleaned with a damp cloth, but do not rub. Never use soap, bleach, laundry detergent or any strong household cleaning agents intended for use on hard surfaces, i.e. woodwork, linoleum or tiles.

When not in use, always keep the carpet rolled up indoors and do not fold. Always ensure that the carpet is dry before doing so. The care label must not be removed and products must be used on outdoor surfaces only, unless clearly stated that they are suitable for indoor surfaces.

The outdoor mats can be washed at 30°C.

NB. Product warranty will become invalid if the carpets are not used correctly.



Outdoor carpets should be spot cleaned with a damp cloth

When not in use, always keep the carpet rolled up indoors and do not fold.



01 Carpets

All outdoor carpets have a thin pile which is lightweight, making them easy to carry and move. They include either Outdoor Rhombus™ backing, which is hardwearing and waterproof for outdoor use only, or specialist indoor/outdoor backing which is suitable for any surface.

Our Chloe Caterpillar outdoor carpet is great for teaching numeracy and literacy in an outdoor setting, whilst the Storytime™ Interactive Carpet Tiles creates opportunities for role play and encourages children to be imaginative and build their self confidence.

We also have carpets which support both mathematical and physical development such as our Natural World™ Counting Mini Carpets and our 1-24 Number Indoor/Outdoor Mini carpets.



Outdoor Play 

Outdoor Play 

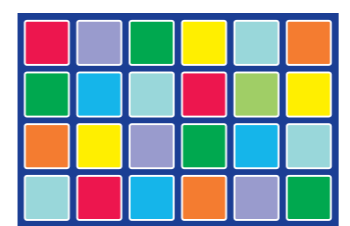


Yoga Position Mini Carpets

• Mini placement carpets supplied with a free of charge holdall for easy storage.

BN2135 / Pack of 32

Size: W x D x: 400 x 400mm (each carpet)



Rainbow™ Squares Placement Rectangular Outdoor Carpet

MAT1032

Size: W x D: 3000 x 2000mm



24 placement squares



Rainbow™ Circle Outdoor Carpets and Holdall

BN0151 / Pack of 30

Size: W x D: 400 x 400mm (each carpet)



BN0151



BN2135



EYFS MAPPING
to help teaching staff choose the right resources.





MAT1026

Back to Nature™ Chloe Caterpillar Numeracy & Literacy Outdoor Carpet

- Great for cross-curricular use, providing opportunities for developing both literacy and numeracy skills.

MAT1026
Size: W x D: 3000 x 2000mm



Features ladybirds with varying spots to depict numbers one to twelve



EYFS MAPPING
to help teaching staff choose the right resources.



Back to Nature™ Sensory Counting Cushions

- Pack of 12 with varying spots to depict numbers one to twelve.
- Encourages numeracy skills, great for group activities and quiet reading times.
- Comforting, plush materials with varying textures promoting sensory exploration.
- Free holdall for easy storage.
- Easy care with removable washable covers.

FC0017-GL
Size: W x D x H: 350 x 300 x 40mm



Pack of 12, complete with a holdall for easy storage

Perfect for use with the Back to Nature™ Chloe Caterpillar Numeracy & Literacy Carpet



Take a closer look



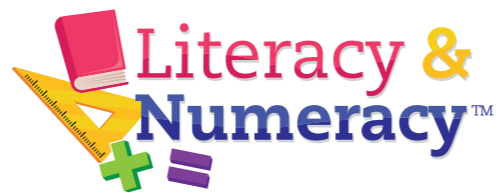
Different tactile fabrics and textures alongside fiddle antennae allow for a greater sensory experience

Take a closer look



FC0017-GL





1-24 Number Indoor / Outdoor Mini Carpets

• Excellent for developing mathematical skills in a fun, interactive way.

BN0150 / Pack of 24
Size: W x D x: 400 x 400 (each carpet)



1	2	3	4	5	6	7	8
9	10	11	12	13	14	15	16
17	18	19	20	21	22	23	24



Suitable for indoor and outdoor use



BN0150



BN2138

Natural World™ Counting Mini Carpets

• Pack of woodland themed indoor/outdoor carpet tiles allow children to practise sums and number bonds.
• Pack includes numbers 0-10, corresponding objects for numbers relating to the theme as well as plus, minus and equal signs.

BN2138 / Pack of 35
Size: W x D: 400 x 400mm (each carpet)



1	2	3	4	5	6	7
8	9	10	0	-	+	=
1	2	3	4	5	6	7
8	9	10	0	-	+	=

x2 each numbered carpet

Suitable for indoor and outdoor use



EYFS MAPPING
to help teaching staff choose the right resources.





BN2136



Storytime™ Interactive Carpet Tiles

- Mix and match these Storytime carpet tiles to create your very own story.

BN2136 / Pack of 32

Size: W x D: 400 x 400mm (each carpet)



Suitable for indoor and outdoor use



Rainbow™ Geometric Shaped Mats & Holdall

FC0025-GL

Pack of 32 Plus Holdall

Size: W x D x H: 350 x 350 x 20mm



Ideal for use alongside our Geometric Shape Carpet on page 52



Indoor/Outdoor Mats



FC0025-GL



BN2136

Suitable for indoor and outdoor use



FC0025-GL



EYFS MAPPING
to help teaching staff choose the right resources.



Rainbow™ Square Mats & Holdall

FC0029-GL
Pack of 32 Plus Holdall
Size: W x D x H: 350 x 350 x 20mm



Seats class of 32



Ideal for use alongside our Essentials™ Rainbow Square Carpet page 35



FC0029-GL

Suitable for indoor and outdoor use



EYFS MAPPING to help teaching staff choose the right resources.



PSE Development



Physical Development



Communication & Language



Literacy



Mathematics



Understanding The World



Expressive Arts & Design

Rainbow™ Circular Donut™ Mats & Holdall

FC0028-GL
Pack of 32 Plus Holdall
Size: Dia x H: 350 x 20mm



Seats class of 32



Suitable for indoor and outdoor use

FC0028-GL





BN0106-N



Suitable for indoor and outdoor use



Take a closer look

Trolleys include lockable castors

Rainbow™ Circular Donut™ Mats & Donut™ Trolley

BN0106-N
Pack of 32 Plus Trolley
Trolley Size: Dia x H: 395 x 780mm
Mat Size: Dia x H: 350 x 20mm



Mats washable at 30°C



Rainbow™ Square Mats & Tuf 2™ Trolley

BN0107-N
Pack of 32 Plus Trolley
Trolley Size: W x D x H: 814 x 385 x 390mm
Mat Size: W x D x H: 350 x 350 x 20mm



Mats washable at 30°C



Take a closer look

Trolleys include lockable castors



BN0107-N

EYFS
EYFS MAPPING
to help teaching staff choose the right resources.

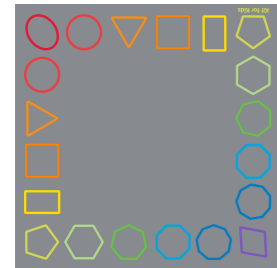
PSE Development
 Physical Development
 Communication & Language
 Literacy
 Mathematics
 Understanding The World
 Expressive Arts & Design

Essentials™ Carpets

Our Essentials™ carpet range has super lightweight Tuf Pile™ and versatile indoor/outdoor backing, providing excellent value and quality.

Essentials™ Rainbow Geometric Border Carpet

MAT1273
Size: W x D: 2000 x 2000mm



Ideal for use alongside our Geometric Shaped Mats FC0025-GL Page 99

Suitable for indoor and outdoor use



MAT1273



EYFS MAPPING
to help teaching staff choose the right resources.



Communication & Language



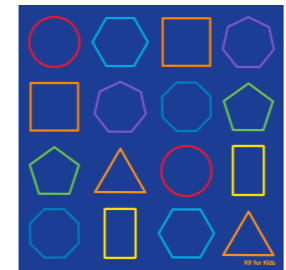
Outdoor Play



MAT1272



MAT1272



Essentials™ Rainbow Geometric Carpet

MAT1272
Size: W x D: 2000 x 2000mm



Suitable for indoor and outdoor use





MAT1268



Ideal for use alongside our Rainbow Square Mats page 100

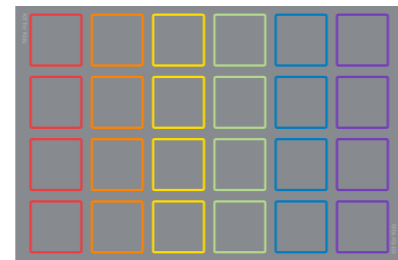


MAT1268

Suitable for indoor and outdoor use

Essentials™ Rainbow Square Carpet

MAT1268
Size: W x D: 3000 x 2000mm



Communication & Language



Outdoor Play



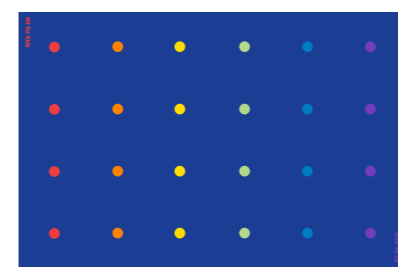
Suitable for indoor and outdoor use



MAT1264

Essentials™ Rainbow Spots Carpet

MAT1264
Size: W x D: 3000 x 2000mm



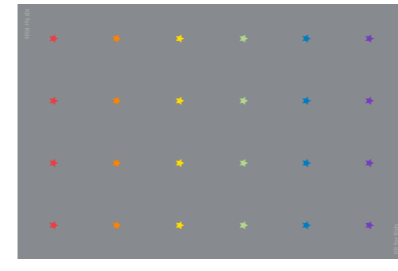
Suitable for indoor and outdoor use



MAT1263

Essentials™ Rainbow Stars Carpet

MAT1263
Size: W x D: 3000 x 2000mm



EYFS MAPPING to help teaching staff choose the right resources.



Small World Road Map Carpets

Our versatile road maps support the development of gross and fine motor skills, and promote imaginative role play.



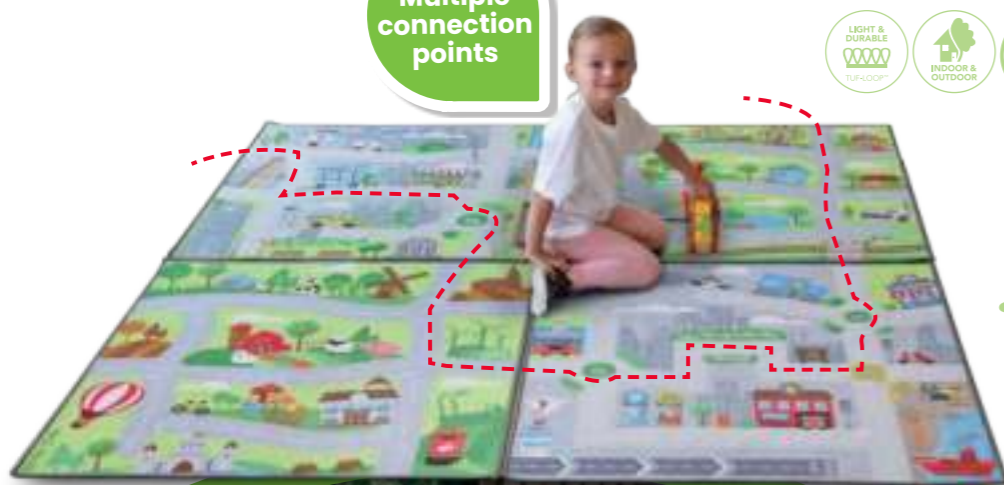
Small World Road Map - Set 1

- Set of 4 road maps that are designed to be placed in any combination next to each other, or used individually.
- Two urban and two country squares, with modern additions such as electric car charging points and recycling bins.
- Supports physical development through wheeled toy play.

MAT1226 / Pack of 4
Size: W x D: 1000 x 1000mm (each carpet)



Multiple connection points



MAT1226

Suitable for indoor and outdoor use



Suitable for indoor and outdoor use

MAT1227

Multiple connection points



MAT1227

Small World Road Map - Set 2

- Set of 4 road maps that are designed to be placed in any combination next to each other, or used individually.
- Each carpet depicts a different environment and climate; urban, desert, arctic and tropical.
- Supports gross and fine motor skill development.

MAT1227 / Pack of 4
Size: W x D: 1000 x 1000mm (each carpet)

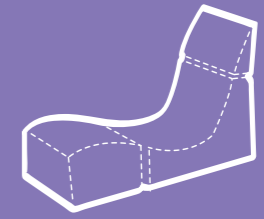


Physical Development

Outdoor Play

EYFS MAPPING
to help teaching staff choose the right resources.

- PSE Development
- Physical Development
- Communication & Language
- Literacy
- Mathematics
- Understanding The World
- Expressive Arts & Design



Soft Furniture

A quality range of soft seating and floor cushions, available in plain colours and distinctive themed prints to suit a variety of learning environments.

Soft Furniture

We offer a number of distinctive products in our soft furniture range, including themed printed soft seating and cushion sets, all of which can be used indoors and outdoors offering a truly versatile resource.

01 Soft Seating

Kit for Kids offer a wide range of innovative seating options, in both plain colours and printed themes.

Our soft seating is ergonomically designed at ideal heights to ensure a child's comfort. Our vinyl is backed with a reinforced mesh to resist tearing or fraying after heavy daily use, and many products also include a non-slip base.

All of our soft furniture complies with UK and European standards to ensure a safe and long lasting product, best suited for busy childcare environments.

These products are manufactured with non-removable covers to make sure children cannot gain access to the foam within.

02 Floor Cushions

We offer an extensive range of vinyl and polyester floor cushions, which are great for reading activities.

We also provide specially designed floor cushions that tackle key topics e.g our Emotions™ range. These are excellent cross-functional products that can be used for smaller group activities and reading as well as for leading interactive group discussions around these topics.

03 Plush

Plush soft play items are great for introducing children to different tactile fabrics as well as providing a soft and comfortable place to sit and play in the nursery environment.

The fabrics are designed to be hardwearing and fade resistant, and can be washed at 30°C to maintain levels of hygiene.

It is essential that all products with removable covers have sealed inner covers so that the foam or fibre core is not accessible to the child. Safety is of the utmost importance to us so our products not only have safety specified interliners but they also have the zip puller removed so that only an adult can open the cover for washing.



04 Cleaning & Care Guide

Both polyester and vinyl soft furnishings can be cleaned with a damp cloth. Never use soap, bleach, ammonia, laundry detergent or any strong household cleaning agents intended for use on hard surfaces, i.e. woodwork, linoleum or tiles.

Our plush soft play items have machine washable covers. Always follow the washing instructions given on the care label of the product. Plush products can be spot cleaned with a damp cloth but as with vinyl, never use soap, bleach, ammonia, laundry detergent or any strong household cleaning agents intended for use on hard surfaces.

Our polyester Rainbow mats are also machine washable at 30°C.

05 Outdoor Use

All of our soft furniture products can be used outdoors but do not store outside. If the products get wet or dirty, use the cleaning instructions above and allow to dry fully indoors.



Scan QR code for more info





English Emotions™ Floor Cushions



Each cushion is printed on both sides; one with a facial expression, the other with the English description.

English Emotions™ Floor Cushions

• Each pack features 6 different emotions.

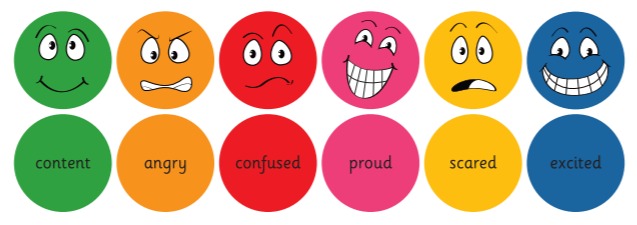
Pack 1



SP2190 / Pack 1 / Pack of 6
Size: Dia x H: 350 x 60mm



Pack 2



SP2191 / Pack 2 / Pack of 6
Size: Dia x H: 350 x 60mm



Pack of 6

SP2190 & SP2191



EYFS MAPPING to help teaching staff choose the right resources.



English Emotions™ Cushions and Tuf 2™ Trolley

- A multi-functional handmade solid wood trolley, which comes with 12 brightly coloured floor cushions.
- Portable storage when not in use.

FN1161-N
Trolley Size: W x D x H: 814 x 385 x 390mm
Cushion Size: Dia x H: 350 x 60mm



Pack 1 and 2 with trolley



English Emotions™ Donut™ Cushions and Donut™ Trolley

- A multi-functional handmade solid wood trolley, which comes with 12 brightly coloured floor cushions.
- Ideal for floor seating and group activities
- Allows easy and mobile storage when not in use.
- Each cushion features three related words to help build vocabulary and language skills.

FN1160-N
Trolley Size: Dia x H: 395 x 785mm
Cushion Size: Dia x H: 350 x 50mm



Trolleys include lockable castors

BEST SELLER

Includes 12 Emotions™ Donut™ Cushions



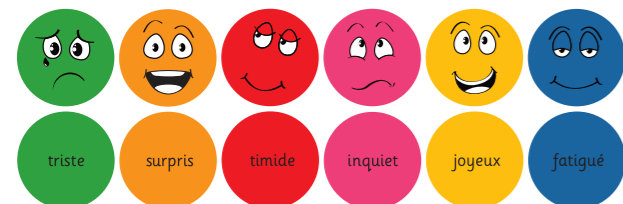
French Emotions™ Floor Cushions

Each cushion is printed on both sides; one with a facial expression, the other with French descriptions for group activity.

French Emotions™ Floor Cushions

• Each pack features 6 different emotions.

Pack 1

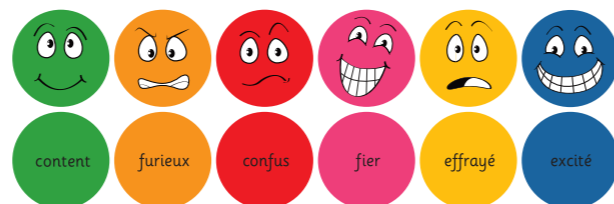


SP2190-FRENCH / Pack 1 / Pack of 6
Size: Dia x H: 350 x 60mm



Emotions™

Pack 2



SP2191-FRENCH / Pack 2 / Pack of 6
Size: Dia x H: 350 x 60mm



French Emotions™ Cushions and Tuf 2™ Trolley



FN1161-FRENCH-N

Trolley Size: W x D x H: 814 x 385 x 390mm
Cushion Size: Dia x H: 350 x 60mm



Pack 1 and 2 with trolley

Trolleys include lockable castors



EYFS MAPPING to help teaching staff choose the right resources.



PSE Development



Physical Development



Communication & Language



Literacy



Mathematics



Understanding The World



Expressive Arts & Design

SP2190 & SP2191 - FRENCH



Soft Furniture

FN1161-FRENCH-N

German Emotions™ Floor Cushions

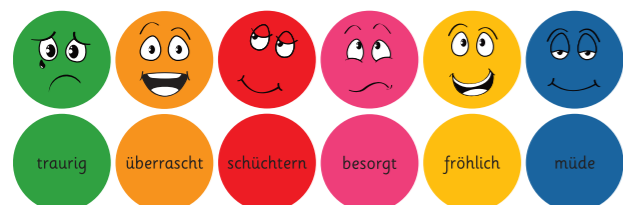
Each cushion is printed on both sides; one with a facial expression, the other with German descriptions for group activity.

German Emotions™ Floor Cushions

• Each pack features 6 different emotions.



Pack 1



Pack 2



SP2107 / Pack 1 / Pack of 6
Size: Dia x H: 350 x 60mm



SP2106 / Pack 2 / Pack of 6
Size: Dia x H: 350 x 60mm



FN1161-DE-N



PSE Development



Soft Furniture



Trolleys include lockable castors



SP2106

Pack 1 and 2 with trolley



German Emotions™ Cushions and Tuf 2™ Trolley



FN1161-DE-N
Trolley Size: W x D x H: 814 x 385 x 390mm
Cushion Size: Dia x H: 350 x 60mm



EYFS MAPPING to help teaching staff choose the right resources.



Emotions™ Floor Cushions

Single sided cushions printed with facial expressions to enable group discussion in any language.

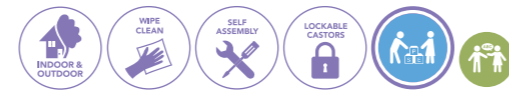


Emotions™ Cushions and Tuf 2™ Trolley

FN1161-SINGLE-N

Trolley Size: W x D x H: 814 x 385 x 390mm

Cushion Size: Dia x H: 350 x 60mm



Pack 1 and 2 with trolley

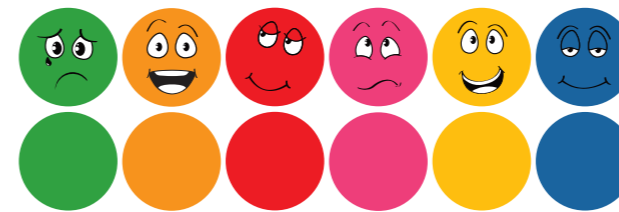
Trolleys include lockable castors



SP2104

Emotions™ Floor Cushions

Pack 1

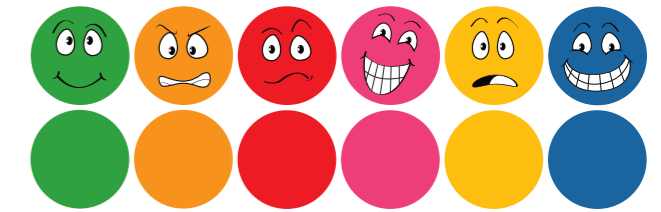


SP2103 / Pack 1 / Pack of 6

Size: Dia x H: 350 x 60mm



Pack 2



SP2104 / Pack 2 / Pack of 6

Size: Dia x H: 350 x 60mm



FN1161-SINGLE-N



EYFS MAPPING
to help teaching staff choose the right resources.





Perfect for use with the NEW Back to Nature™ Chloe Caterpillar Numeracy and Literacy Carpet page 51



FC0017-GL



Take a closer look



Different tactile fabrics and textures alongside fiddle antennae allow for a greater sensory experience



Take a closer look



Suitable for indoor and outdoor use



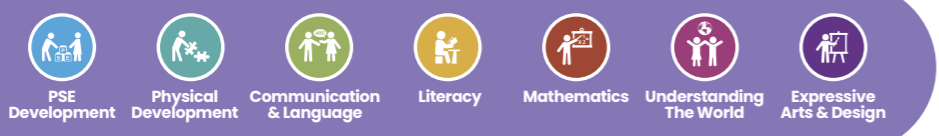
Back to Nature™ Sensory Ladybirds Counting Cushions

- Pack of 12 ladybirds with varying spots to depict numbers 1-12.
- Suitable for basic numeracy activities, both as a group activity or individually.
- Comforting plush materials with varying textures promoting sensory exploration.
- Suitable for use indoors and outdoors.
- Covers are machine washable at 30°C, perfect for maintaining a hygienic environment.
- Great for reading or quiet corners.
- Includes a free holdall for easy out-of-the-way storage.

I'm NEW



Pack of 12. Complete with a holdall for easy storage



FC0017-GL



Back to Nature™ Soft Toy Set

- Comfortable, plush and tactile materials.
- Pack of 8 includes 2 of each: bee, ladybird, sunflower and butterfly.
- Free holdall for easy storage.
- Easy care with removable washable covers.



FC0010-GL

Size: Dia x H: 400 x 40mm Approx



Pack of 8. Complete with a holdall for easy storage



FC0010-GL



SP3196-P



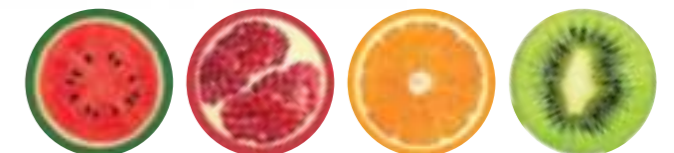
Suitable for indoor and outdoor use



Fruit Cushions

SP3196-P / Polyester / Pack of 4

Size: Dia x H: 350 x 60mm



EYFS MAPPING to help teaching staff choose the right resources.





Natural World™ Large Floor Cushions

SAGBG6-P / Polyester / Pack of 3
Size: Dia x H: 900 x 100mm



An interactive woodland range with realistic designs to bring the outdoors into the classroom environment



SP3195-P

Suitable for indoor and outdoor use

High quality wipe clean polyester

NATURAL World™

Natural World™ Nature Cushions

SP3195-P / Polyester / Pack of 5
Size: Dia x H: 350 x 60mm



SAGBG6-P



EYFS MAPPING to help teaching staff choose the right resources.



Small and Large Floor Cushions

Great for group seating areas and reading time. Wipe clean, waterproof, soft touch, quality vinyl.



Early Years Story Cushions

BNBUN7 / Pack of 10
Size: Dia x H: 440 x 80mm



Colours may vary

Now with one grey side for less distraction in your setting



BNBUN7



BNBUN7



Suitable for indoor and outdoor use



EYFS
EYFS MAPPING
to help teaching staff choose the right resources.

- PSE Development
- Physical Development
- Communication & Language
- Literacy
- Mathematics
- Understanding The World
- Expressive Arts & Design



Suitable for indoor and outdoor use

SAGBG9



SAGBG9

Now with one grey side for less distraction in your setting

Early Years Large Floor Cushions

SAGBG9 / Pack of 3
Size: W x D x H: 900 x 670 x 150mm



Colours may vary



EYFS MAPPING to help teaching staff choose the right resources.



PSE Development



Physical Development



Communication & Language



Literacy



Mathematics



Understanding The World



Expressive Arts & Design



MAT1271

Great to pair up with our Geometric shape carpet MAT1271. Page 52



Suitable for indoor and outdoor use

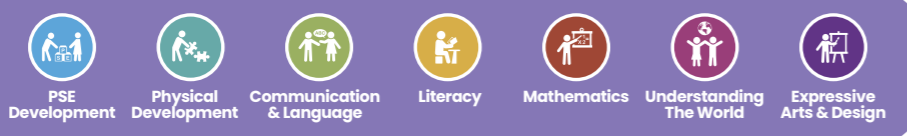


Rainbow™ Geometric Shaped Mats & Holdall

FC0025-GL
Pack of 32 Plus Holdall
Size: W x D x H: 350 x 350 x 20mm



EYFS
EYFS MAPPING to help teaching staff choose the right resources.



Rainbow™ Square Mats & Holdall

FC0029-GL
Pack of 32 Plus Holdall
Size: W x D x H: 350 x 350 x 20mm



Seats class of 32



Mats can also be purchased with storage trolleys on pages 178-179



Seats class of 32

Suitable for indoor and outdoor use

Rainbow™ Circular Donut™ Mats & Holdall

FC0028-GL
Pack of 32 Plus Holdall
Size: Dia x H: 350 x 20mm



FC0028-GL



Bi-Colour Donut™ Cushions

FN0108/Pack of 12
Size: Dia x H : 350 x 50mm



Suitable for indoor and outdoor use

Folding Indoor / Outdoor Mats

FC0027/ Pack of 10
Size (unfolded): W x D x H: 370 x 370 x 20mm
Size (folded): W x D x H: 370 x 185 x 40mm



Innovative folding design keeps the wet or dirty side away from the children after use

Rainbow™ Mats



Suitable for indoor and outdoor use



FC0027

Indoor / Outdoor Circular Mats

FC0026
Size: Dia x H : 350 x 20mm



Wipe clean vinyl mats for use indoors and outdoors



Now with one grey side for less distraction in your setting



FN0108



EYFS
EYFS MAPPING
to help teaching staff choose the right resources.



Natural World™ Seating Range

Nature inspired seating sets that can be mixed and matched to suit any environment.



Natural World™ Seating



Suitable for indoor and outdoor use



Perfect for use with the Forest Friends™ carpet page 66

Natural World™ Toadstool Seating

SP3405 / Natural World™ Small Toadstool seat
Size: Dia x H: 350 x 250mm

SP3406 / Natural World™ Large Toadstool seat
Size: Dia x H: 500 x 250mm



Perfect for use with the Natural World™ carpet range pages 54-59

250mm seat height

Natural World™ Seating



SP3405 & SP3406



Scan for 360° Video

Forest Friends™ Toadstool Seat

SP3302-LH / Forest Friends™ Toadstool Seat
Size: Dia x H: 500 x 250mm



250mm seat height



EYFS MAPPING to help teaching staff choose the right resources.

- PSE Development
- Physical Development
- Communication & Language
- Literacy
- Mathematics
- Understanding The World
- Expressive Arts & Design

Natural World™ Seating Range

Unique leaf design seating range in calming neutral tones



Natural World™ Double Leaf Seat

SP3404
Size: W x D x H: 800 x 355 x 250mm



250mm seat height



Natural World™ Leaf Seat

SP3403
Size: W x D x H: 400 x 355 x 250mm



Suitable for indoor and outdoor use

SP3403 & SP3404

Natural World™ Seating



Soft Furniture

Ideal for use alongside our Natural World™ Leaf Placement Carpet page 55

Multiple seats can be arranged into a variety of configurations to suit the setting

SP3403 & SP3404



EYFS MAPPING to help teaching staff choose the right resources.



Back to Nature™ Soft Seating Range

Brightly coloured soft seating range to compliment our best selling carpets in this theme.



250mm seat height



Back to Nature™ Modular Soft Seating Range

SP3500 / Back to Nature™ Seat
Size: W x D x H: 350 x 420 x 470mm

SP3501 / Back to Nature™ 2 Seat Sofa
Size: W x D x H: 700 x 420 x 470mm

SP3502 / Back to Nature™ Pouf
Size: Dia x H: 500 x 250mm

SP3503 / Back to Nature™ 3 Seat Sofa
Size: W x D x H: 1000 x 420 x 520mm



EYFS
EYFS MAPPING
to help teaching staff choose the right resources.



PSE Development

Physical Development

Communication & Language

Literacy

Mathematics

Understanding The World

Expressive Arts & Design

Back to Nature™ Seating



Soft Furniture

Perfect for use with our Back to Nature™ Carpets pages 62-63



Back to Nature™ Seating



Back to Nature™ Seating

Folding Sensory Lounge Chairs

A unique and innovative children's seat, ideal for group seating and for use as a relaxing lounge for reading.

Folding Sensory Lounge Chair - Single

SP1452-GY

Folded Size: W x D x H: 360 x 465 x 305mm
 Unfolded Size: W x D x H: 360 x 755 x 485mm



Ergonomically designed for postural support and long-stay comfort.



SP1452-GY

Folding Sensory Lounge Chair



Soft Furniture



SP1453-GY



Folding Sensory Lounge Chair - Double

SP1453-GY

Folded Size: W x D x H: 720 x 465 x 305mm
 Unfolded Size: W x D x H: 720 x 755 x 485mm



EYFS MAPPING
to help teaching staff choose the right resources.



PSE Development



Physical Development



Communication & Language



Literacy



Mathematics



Understanding The World



Expressive Arts & Design



Soft Play

A range of versatile soft play shapes, activity mats and sensory items that are ideal for imaginative play and supporting physical development.

Soft Play

Our range of soft play products is great for promoting imaginative and active play in the childcare environment.

From small activity mats and sensory cubes to soft play kits, our range can transform any early years environment.

01 Activity Kits

Our versatile activity kits include a variety of soft play shapes. They are ideal for physical learning activities including construction, moving and handling, role play, and allowing children to create their own paths and obstacle courses.

All activity kits come with a storage holdall to make them portable, perfect if they are to be a shared resource, and easy to store.

We use high quality vinyls to ensure these products last within an active and busy nursery environment.

02 Sensory

Our range of sensory items are designed to aid the development of visual and motor skills. The Mirror Cube has soft mirrors to promote self-awareness which are set within a variety of geometric shapes, providing an opportunity for early shape recognition.



03 Play Mats

All of our activity mats fold for convenient storage and the strong welded seams allow for these mats to be used both indoors and outdoors.



04 Cleaning & Care Guide

Our soft play products can be cleaned with a damp cloth. Never use soap, bleach, ammonia, laundry detergent or any strong household cleaning agents intended for use on hard surfaces, e.g. woodwork, linoleum or tiles.

05 Outdoor Use

All of our soft play products can be used outdoors but do not store outside. If the products get wet or dirty, use the cleaning instructions above and allow to fully dry indoors.





Sensory Cubes

Aiding dexterity, fine motor and visual development skills.

Scan for 360° Video



Mirror Cube (flexible mirror)

- Soft play cube with soft mirrors.
- Helps to develop self awareness.
- Geometric shaped mirrors for early shape recognition.
- Colours may vary.

SP1040

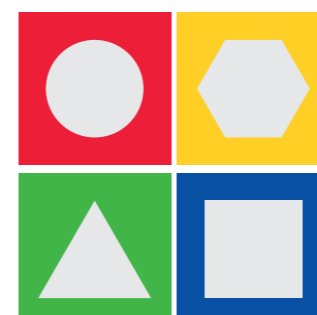
Size: W x D x H: 250 x 250 x 250mm



SP1040



SP1040



Four different mirror shapes, each on a different colour background



EYFS MAPPING to help teaching staff choose the right resources.



PSE Development



Physical Development



Communication & Language



Literacy



Mathematics



Understanding The World



Expressive Arts & Design

Getting Ready Cube

- Award winning soft play activity cube to support fine motor skills.
- Features six different and recognisable fastenings.
- Colours may vary.

SP3202

Size: W x D x H: 250 x 250 x 250mm



Supports fine motor skill development



Physical Development



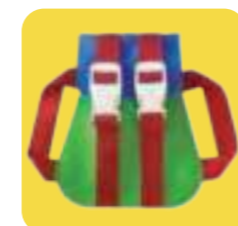
Soft Play



SP3202

SP3202

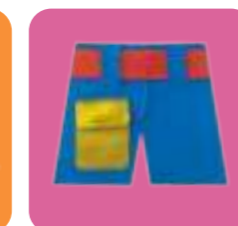
Each side features a different fastening activity



Buckles on backpack



Hook and loop on gloves and laces on shoes



Belt with hook and loop flap on trousers



Button on waistcoat



Zip on dress



Press studs on raincoat

Scan for 360° Video



EYFS MAPPING
to help teaching staff choose the right resources.



Activity Mats

Soft vinyl mats to support a variety of active play games and activities.

3 Section Folding Activity Mat

- Welded seams for indoor or outdoor use.
- Folds for storage.
- Suitable for ages 1+.
- Colours may vary.

AMTCC1 / Pack of 24

Size: W x D x H: 900 x 450 x 10mm



Physical Development



Soft Play



AMTCC1



Suitable for indoor and outdoor use

Assorted Colours

Made with 3 sections that fold easily for storage



AMTCC1



EYFS MAPPING to help teaching staff choose the right resources.



Activity Kits

Brightly coloured, versatile assortment of soft play shapes for imaginative active play. Free Holdalls with all sets make these excellent value for money, portable and easy to store away.



10 Soft Play Pieces

Soft Play Explorer Set

- Great for role play and construction.

SP1314

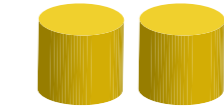
Holdall Size: W x D x H: 400 x 400 x 400mm



Physical Development



X1 Half Cylinder
L 200 x W 200 x D 100mm



X2 Cylinders
L 200 x (Dia) 200mm



X2 Cubes
L 200 x W 200 x D 200mm

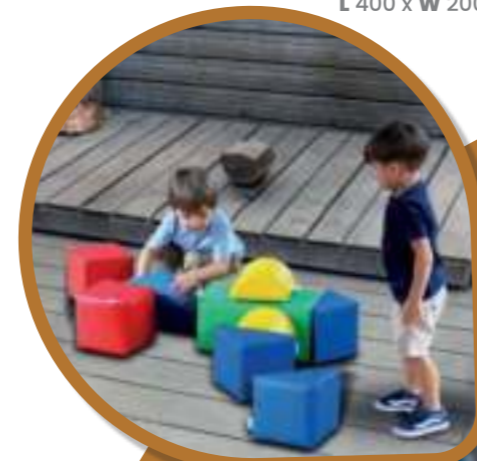


X1 Round beam Supports
L 400 x W 200 x D 200mm



X4 Small Triangles
L 280 x W 200 x D 140mm

Soft Play Components



Suitable for indoor and outdoor use



SP1314



to help teaching staff choose the right resources.





Soft Play Build-A-Set

• Larger set allowing children to create a variety of role play and circuit course construction.

SP1315

Holdall Size: W x D x H: 550 x 400 x 600mm



13 Soft Play Pieces



SP1315



Build many different configurations that encourage imaginative play

Physical Development

Soft Play Components

- X1 Half Cylinder**
L 200 x W 200 x D 100mm
- X2 Small Triangles**
L 280 x W 200 x D 140mm
- X2 Cubes**
L 200 x W 200 x D 200mm
- X1 Round Beam**
L 400 x (Dia) 200mm
- X1 Half Disc**
L 400 x W 200 x D 150mm
- X1 Round Beam Support**
L 400 x W 200 x D 200mm
- X1 Semi Circle**
L 650 x W 150 x D 325mm
- X1 Large Triangle**
L 400 x W 200 x D 200mm
- X1 Square Beam**
L 400 x W 200 x D 200mm
- X2 Cylinders**
L 200 x (Dia) 200mm



Suitable for indoor and outdoor use



SP1315

EYFS
EYFS MAPPING
to help teaching staff choose the right resources.



Tables & Chairs

A functional and quality range of wooden tables and chairs, designed for the rigours of daily use in a busy classroom environment.



Tables & Chairs

Kit for Kids tables and chairs offer exceptional build quality ensuring our products are both strong and stable.

Safety is of the utmost importance in the learning environment which is why our furniture is tested for endurance and meets BSEN1729-2:2012 + A1:2015 Furniture – Chairs and Tables for Educational Institutions.

TUF CLASS™

TUF TOP™



01 Tables

We use high quality laminates and lacquered finishing paints, mounted on a dense MDF core to ensure a quality finish and making our table tops resistant to scratching and colour fading. All natural hardwood and painted plywood is varnish protected to aid longevity.

The wooden leg tables are reinforced with a supportive under-frame which is both glued and screwed to the table top. They are counterbalanced meaning they have a thick laminate base panel which adds strength and prevents warping over time.

Our height adjustable Tuf Top™ tables have Tri-lock™ reinforced legs to give additional strength and self levelling feet, ideal for uneven floors around the school.

02 Chairs

Our chairs are delivered fully assembled.

All joints are reinforced by screws, wooden dowels and glue to ensure their long-term strength. Our chairs have a crossbar between the front legs to reinforce the chair frame.

We also pride ourselves on ensuring that all products manufactured from hardwood are selected from sustainable forests.



Reinforced with crossbar

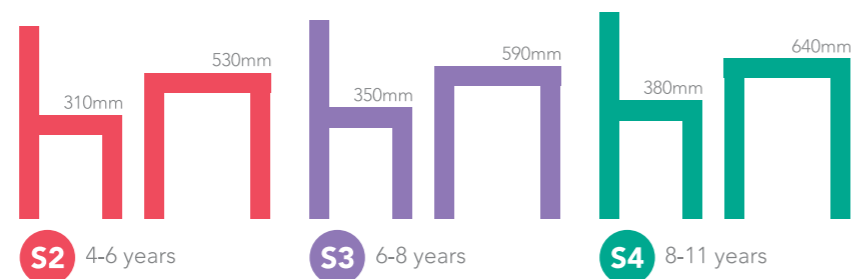
European Standards For Tables & Chairs

BS EN1729 Part 1
Functional Dimensions

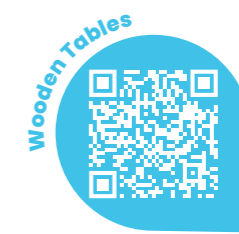
All Kit for Kids tables and chairs are manufactured to the highest standards. Ergonomic design depends on having the right furniture height for the child at the right age. We have adopted the European standard BS EN1729 Part 1 Functional Dimensions.

Our Tuf Class™ and Tuf Top™ wooden tables and chairs are made to the size marks S2 to S4 for correct posture and meet the recommended popliteal chair and table heights.

Age Recommendation For Classroom Furniture



Scan QR Code for more info



Classroom Wooden Chairs

Quality, hand crafted solid wooden children's chairs.

Finished with acrylic scratch resistant multicoated varnish.

All chairs meet recommended BS EN1729 part 1 Primary Height Size Marks.



Stackable for out of the way storage

All chairs are delivered fully assembled



FN0032-3

Super strong construction and reinforced with a cross bar for durability

Wooden Chairs



Sold in packs of 2 chairs

Grey Wooden Chairs

Tuf Class™ Wooden Chair Grey S2 (Pack of 2) 4-6 yrs

FN0032-2
Size: W x D x SH: 376 x 350 x 310mm

Tuf Class™ Wooden Chair Grey S3 (Pack of 2) 6-8 yrs

FN0032-3
Size: W x D x SH: 376 x 350 x 350mm

Tuf Class™ Wooden Chair Grey S4 (Pack of 2) 8-11 yrs

FN0032-4
Size: W x D x SH: 376 x 350 x 380mm



Grey

Natural

Natural Wooden Chairs

Tuf Class™ Wooden Chair Natural S2 (Pack of 2) 4-6 yrs

FN0002-2
Size: W x D x SH: 376 x 350 x 310mm

Tuf Class™ Wooden Chair Natural S3 (Pack of 2) 6-8 yrs

FN0002-3
Size: W x D x SH: 376 x 350 x 350mm

Tuf Class™ Wooden Chair Natural S4 (Pack of 2) 8-11 yrs

FN0002-4
Size: W x D x SH: 376 x 350 x 380mm



Available in 3 seat heights

FN0002-3



Classroom Grouping Tables

Sturdy laminate top tables with solid wood under-frames and legs.



Beech



Hardwearing and wipe clean laminate tops designed for daily school use

- Rounded bullnose edged table tops for extra durability and added safety
- Available in 3 heights
- Mix and match to create a variety of configurations
- Meet recommended BS EN1729 part 1 Primary Heights Size Marks

FN0205



Grouping Tables



Tables & Chairs

Rectangular Tables

Size: W x D: 1100 x 550mm

Code	Description (Size Mark)	Height (mm)	Approx. Age
FN0202-2	Tuf Class™ Rectangular Table Beech S2	530	4-6 yrs
FN0202-3	Tuf Class™ Rectangular Table Beech S3	590	6-8 yrs
FN0202-4	Tuf Class™ Rectangular Table Beech S4	640	8-11 yrs



Trapezoidal Tables

Size: W x D: 1100 x 550mm

Code	Description (Size Mark)	Height (mm)	Approx. Age
FN0205-2	Tuf Class™ Trapezoidal Table Beech S2	530	4-6 yrs
FN0205-3	Tuf Class™ Trapezoidal Table Beech S3	590	6-8 yrs
FN0205-4	Tuf Class™ Trapezoidal Table Beech S4	640	8-11 yrs



Various configurations



FN0202



Height Adjustable Themed Tables



- Our premium quality tables each come with an attractive shaped top which helps facilitate creative interaction
- Frames are black powder coated (EPC) for scratch resistance and longevity



Tuf Top™ Height Adjustable Arc Table
 Size: W x D: 1600 x 800mm
 FN0163-BN Maple
 FN0164-BN Grey
 FN0005-A-BN Red
 FN0006-A-BN Blue



Tuf Top™ Height Adjustable Flower Table
 Size: 1525mm dia
 FN0167-BN Maple
 FN0168-BN Grey
 FN0010-A-BN Red
 FN0011-A-BN Blue



Tuf Top™ Height Adjustable Teacher Flower Table
 Size: 1525mm dia
 FN0171-BN Maple
 FN0172-BN Grey
 FN0154-BN Blue



Tuf Top™ Height Adjustable Rectangular Table
 Size: W x D: 1500 x 750mm
 FN0173-BN Maple
 FN0174-BN Grey
 FN0156-BN Red
 FN0157-BN Blue



Tuf Top™ Height Adjustable Horseshoe Table
 Size: W x D: 1675 x 1520mm
 FN0169-BN Maple
 FN0170-BN Grey
 FN0013-A-BN Red
 FN0014-A-BN Blue



Seating Numbers

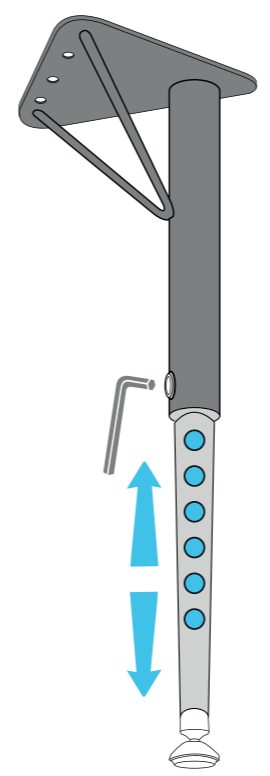


Seats up to 6 children

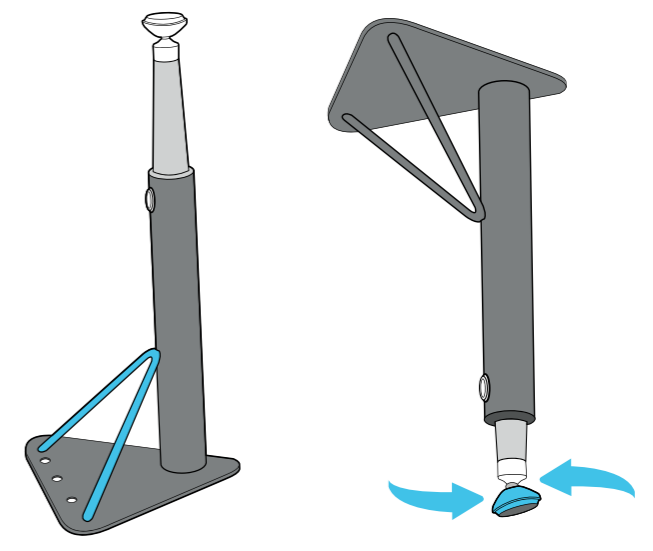


Seats up to 8 children

Seats up to 4 children



Height Adjustable Legs
 Adjustable heights in 25mm increments: nominal 430 to 635mm.



Tri-lock™ System
 Kit for Kids unique Tri-Lock™ system provides maximum leg strength in all heights and protects against multidirectional impacts.

Self Levelling Feet
 Height adjustable legs feature self levelling feet ideal for uneven floors around the school.

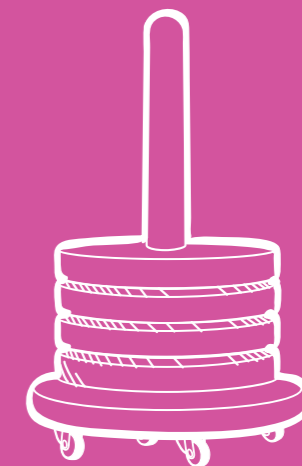


FN0167-BN



FN0174-BN

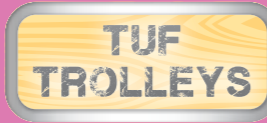




Trolleys

A range of quality wooden and metal trolleys for robust storage solutions.

Trolleys



The Kit for Kids range of trolleys combines large capacity and mobility with safety and stability.

All trolleys meet the BS EN 16121:2013+A1:2017 (Level 2) testing standard for strength and stability, recommended for heavy use in schools. As these products are both heavy and bulky, our furniture is delivered within a double carton which is foam lined and drop tested to make sure your products arrive in perfect condition.



All Kit for Kids trolleys come with 2 lockable castors



All large trolleys come with 5 years warranty



01 Tuf™ & Tuf 2™ Trolleys

At Kit for Kids we offer wooden and metal trolley options, both of which are sturdy and functional. Our trolleys are hand finished with heavy duty castors for high weight tolerances, two of which are lockable for static use, and fixing points are reinforced for longevity.

Our wooden trolleys use contoured MDF laminate panels with sealed matching edges for durability and low maintenance, with reinforced scratch resistant frames to give superior strength.

Shelves are individually reinforced to take excessive loading depending on the trolley's application.








02 Donut™ Trolleys

Innovatively designed to fit either 12 or 24 Donut™ cushions or 32 Rainbow™ mats, these sustainable hardwood trolleys allow easy and practical storage when not in use.

These are great for sharing resources between classrooms.



Scan QR Code for more info

Tuf™ Trolley Range

Strong steel frame trolleys, designed for longevity and to manage the daily rigours of a busy school environment.

The reinforced blue and silver powder coated (EPC) scratch resistant structure gives superior strength. Supplied flat packed.



Tuf™ Double Lunchbox Trolley

FN0600

Size: W x D x H: 1003 x 610 x 1115mm



All trolleys come with 2 lockable castors

FN0600



Holds up to 60 lunchboxes



Features 30 hooks for full class size

FN0601



Tuf™ Classroom Cloakroom Trolley

- Double sided to store 30 coats.
- Large base storage shelf, ideal for shoes and bags with a centre divide.
- Includes label holder across the top panel.

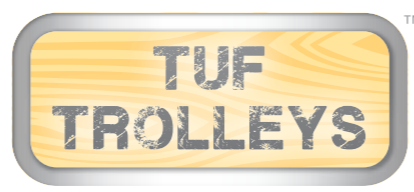
FN0601

Size: W x D x H: 1200 x 604 x 1115mm





Tuf 2™ Trolley Range



Premium robust wooden trolleys, designed for longevity and to manage the daily rigours of a busy school environment.

We use contoured MDF laminate panels with sealed matching edges for added durability and low maintenance, with reinforced powder coated (EPC) scratch resistant frames to give superior strength. Supplied flat packed.



All trolleys come with 2 lockable castors

Tuf 2™ Double Lunchbox Trolley

- Includes metal label holder on the end panel to identify class or year ownership.

FN0604
Size: W x D x H: 1215 x 740 x 1160mm



Suitable for up to 60 lunchboxes

Beech



I'm NEW

Tuf 2™ Classroom Cloakroom Trolley

- Double sided to store 30 coats.
- Metal name-card holders for easy location and identification of hooks.
- Metal label holder on end panel to identify class or year ownership.
- Large base storage shelf, ideal for shoes and bags, with a centre divide.

FN0602-N
Size: W x D x H: 1610 x 740 x 1140mm



Maple

Metal label holder on end panel to identify class or year ownership



Features 30 hooks for full class size



FN0602-N

Donut™ Multi-Seat Trolleys

Cushion trolleys that carry 12 or 24 floor cushions (included). Ideal for group activities, allowing for easy and practical storage when not in use. Excellent for sharing resources between classrooms. Colours may vary.

donut™

Now with one grey side to minimise distraction when required.



Suitable for indoor and outdoor use



Donut™ Trolleys



Trolleys

FN0080-N



FN0079



Donut™ Multi-Seat Trolley including 12 Bi-Colour Cushions

FN0080-N

Trolley Size: Dia x H: 395 x 785mm
Cushion Size: Dia x H: 350 x 50mm



Donut™ Multi-Seat Trolley including 24 Bi-Colour Cushions

FN0079

Trolley Size: W x D x H: 700 x 350 x 785mm
Cushion Size: Dia x H: 350 x 50mm



Rainbow™ Mats

Brightly coloured, washable mats for indoor and outdoor use.

Rainbow™ Square Mats & Tuf 2™ Trolley

- Mats are washable at 30°C.
- Also includes additional free storage holdall.

BN0107-N Pack of 32 Plus Trolley

Mat Size: Dia x H: 350 x 350 x 20mm
Trolley Size: W x D x H: 814 x 385 x 390mm

FC0029-GL Pack of 32 Square Mats (without trolley)

Mat Size: W x D x H: 350 x 350 x 20mm



Rainbow™ Circular Donut™ Mats & Donut™ Trolley

- Mats are washable at 30°C.
- Also includes additional free storage holdall.

BN0106-N Pack of 32 Plus Trolley

Mat Size: Dia x H: 350 x 20mm
Trolley Size: Dia x H: 395 x 785mm

FC0028-GL Pack of 32 Circular Mats (without trolley)

Mat Size: Dia x H: 350 x 20mm



BN0107-N

Suitable for indoor and outdoor use



Seats groups of 32

BN0106-N





Rest & Changing

From basic changing and sleep mats to our high quality professional Snoozemat®, Kit for Kids has everything you need for a busy childcare environment.



Rest & Changing

Our Rest & Changing range includes high quality changing and sleep products. All are made from stain resistant and wipe clean vinyls, as we understand the importance of hygiene in a busy childcare environment.

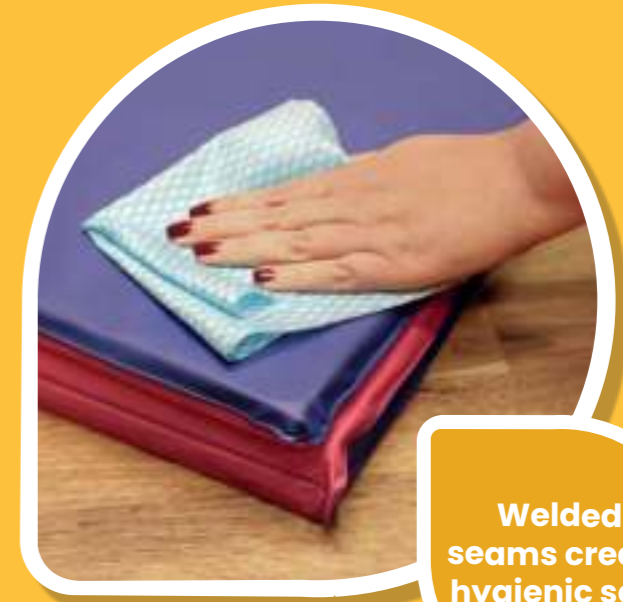
Quiet time is as important for physical development as play time during the early years, and our Snoozeland® products are perfectly suited to give children a comfortable place to rest.



25mm mat depth for comfort

01 Cleaning & Care Guide

Vinyl products can be cleaned with a damp cloth. Never use soap, bleach, ammonia, laundry detergent or any strong household cleaning agents intended for use on hard surfaces, e.g. woodwork, linoleum or tiles.



Welded seams create hygienic seal





Snoozemat® Silver

Durable, hard-wearing rest mat, with welded seams.

Snoozemat® Silver

- Durable, hard-wearing rest mat, with welded seams.
- Suitable for 1 year +.
- Sold in packs of 10.

SZM003

Size: W x D x H: 1200 x 600 x 25mm



Snoozemat® Silver and Holdall Set

- Includes x6 Snoozemats® and x1 Holdall.

SZM008-A

Size: W x D x H: 620 x 400 x 500mm



Snoozeland® Fitted Sheet

- Cotton fitted sheet which fits snugly over any Snoozemat®.
- Protects the mat and provides a comfortable warm sleeping surface.
- Sold in packs of 10.

SZMCT3

Size: W x D: 1200 x 650mm



Fitted sheet washable at 40°C



Snooze mat

Take a closer look



SZM003

Changing Mats

Our high quality changing mats are a must have for any nursery.

Childchanger™ Changing Mat

- Hygienic welded seams.
- Folding wings to allow the changing mat to fit between most surface mounted changing areas or freestanding changing units.
- Extra long size allows use with older or special needs children.
- Sold in packs of 10.

Size: W x D x H: 760 x 500 x 60mm



Snooze
land®

Scan for 360° Video



With non slip base for added safety

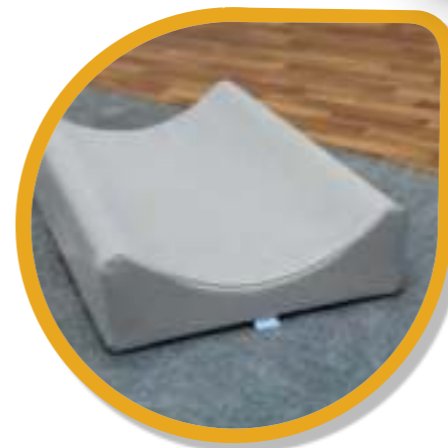
Snoozeland® Changing Mat

- Our toughest professional changing mat.
- The deep profiled foam design forms a concave surface to gently hold active and larger babies without restricting access.
- Sold in packs of 3.

Size: W x D x H: 700 x 460 x 150mm



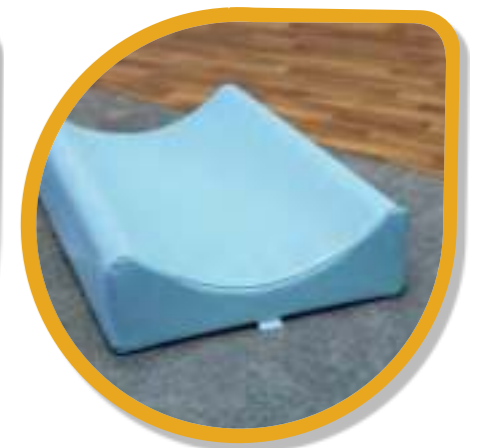
BEST
SELLER



Snoozeland®
Changing Mat - Grey
SZCHMAT7-G



Snoozeland®
Changing Mat - Pink
SZCHMAT7-P



Snoozeland®
Changing Mat - Light Blue
SZCHMAT7-B



Changing Mats



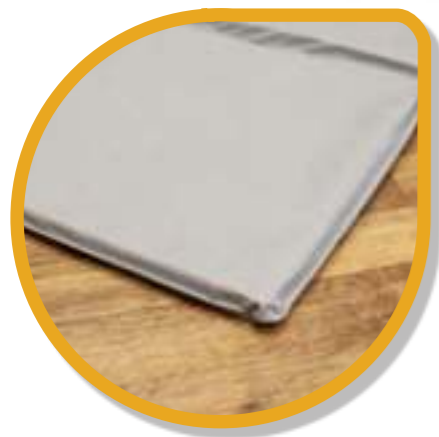
Rest & Changing

Folding Sleep Mats

Durable, hard wearing rest mat, with welded seams.



BEST SELLER



Folding Sleep Mat
Grey
SZM014-GREY



Folding Sleep Mat
Lime Green
SZM014-LG



Folding Sleep Mat
Blue
SZM014-B



SZM014-B



SZM014-B



Folding Sleep Mat

- Space saving folding design.
- Soft feel PVC for comfort and hygiene.
- Suitable for 1 year +.
- Sold in packs of 10.

Size: W x D x H: 1200 x 600 x 25mm



Kit for Kids[®]

Care • Develop • Grow

We create products to improve
the lives of children worldwide.

We focus on the aspects of a
child's journey that
really matter;

Care, Development, & Growth.



Follow us on our journey
#kitforkids